

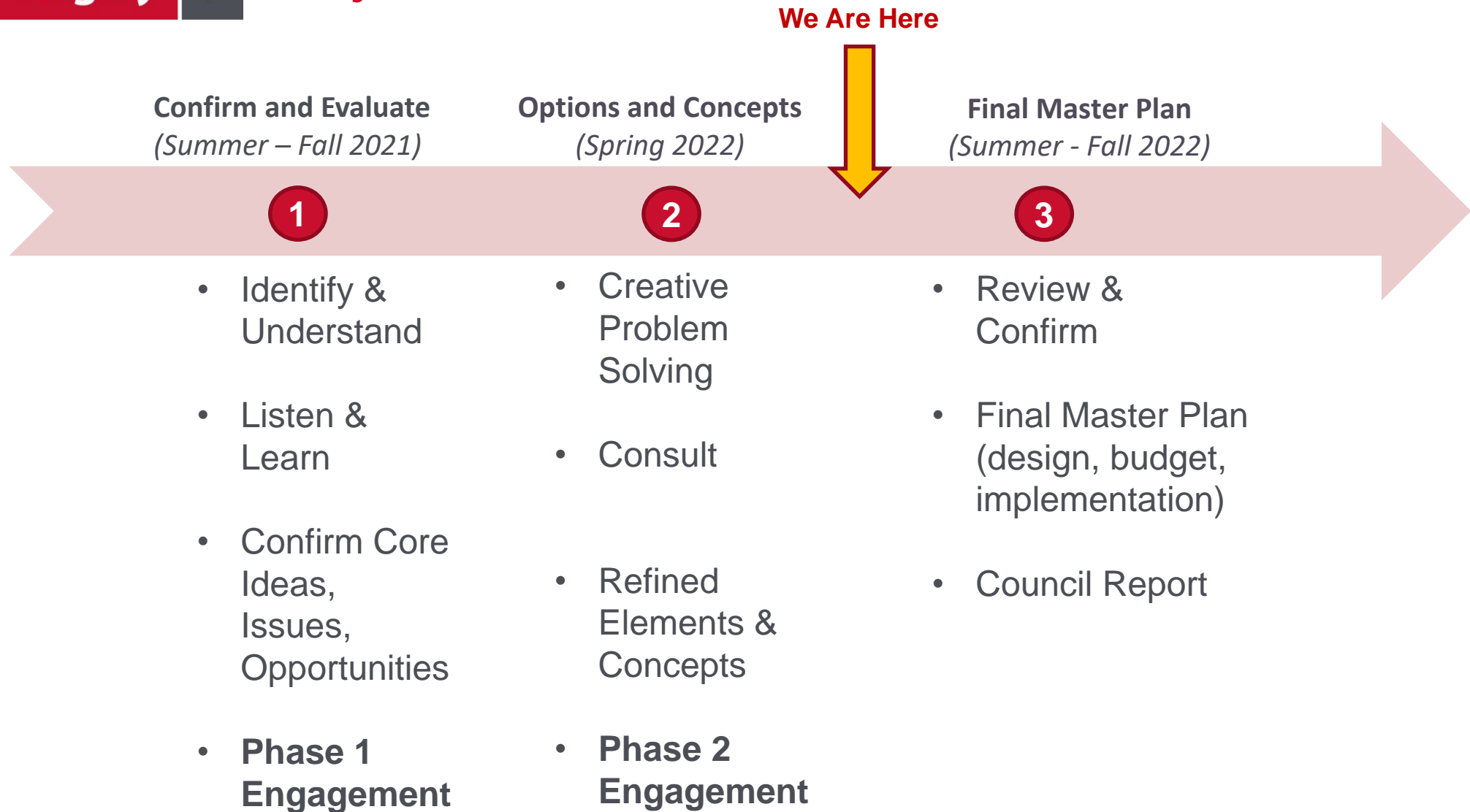


Report Back Session

Crescent Road N.W. Master Plan – Phase 2 Engagement

June 14, 2022

Project Timeline



Phase Two Approach and Methods

Purpose:

- Gather feedback over 3 general question areas:
 - Proposed design options
 - Design elements to guide the final design
 - Community comfort with closures of Crescent Road

When and How:

- April 6 to May 4, 2022
 - 3 online surveys
 - 2 in-person, on-site events
 - 2 virtual workshop/meeting events

Who:

- **1,044 participants** online
- **38 participants** during on-site events
- **43 participants** during the workshop/meeting events
- **Total of ~2,200 pieces of input**

1) Design Options
'How can we layout the space?'

Survey: 20 min



2) Design elements
'How does the space feel?'

Survey: 10 min



3) Closure Opportunities

Survey: 3 min



FLEXIBLE DESIGN

- Propose a street design that can accommodate some degree closure to be responsive and flexible to community concerns.

Approach to Phase 2 Feedback

Feedback on...

three proposed design options...

- Helps identify the design elements of each design option that work best to meet the needs of the community

design elements to guide the final design..

- Helps identify what experiential aspects are important to include in the final design of the space

community comfort with closures of Crescent Road...

- Helps inform the long-term plan for closures and inclusion of closure elements in the design

A Note on Themes

The themes outlined in this presentation represent a combination of commonly heard themes, as well as some unique or insightful themes that may have only been shared a handful of times.

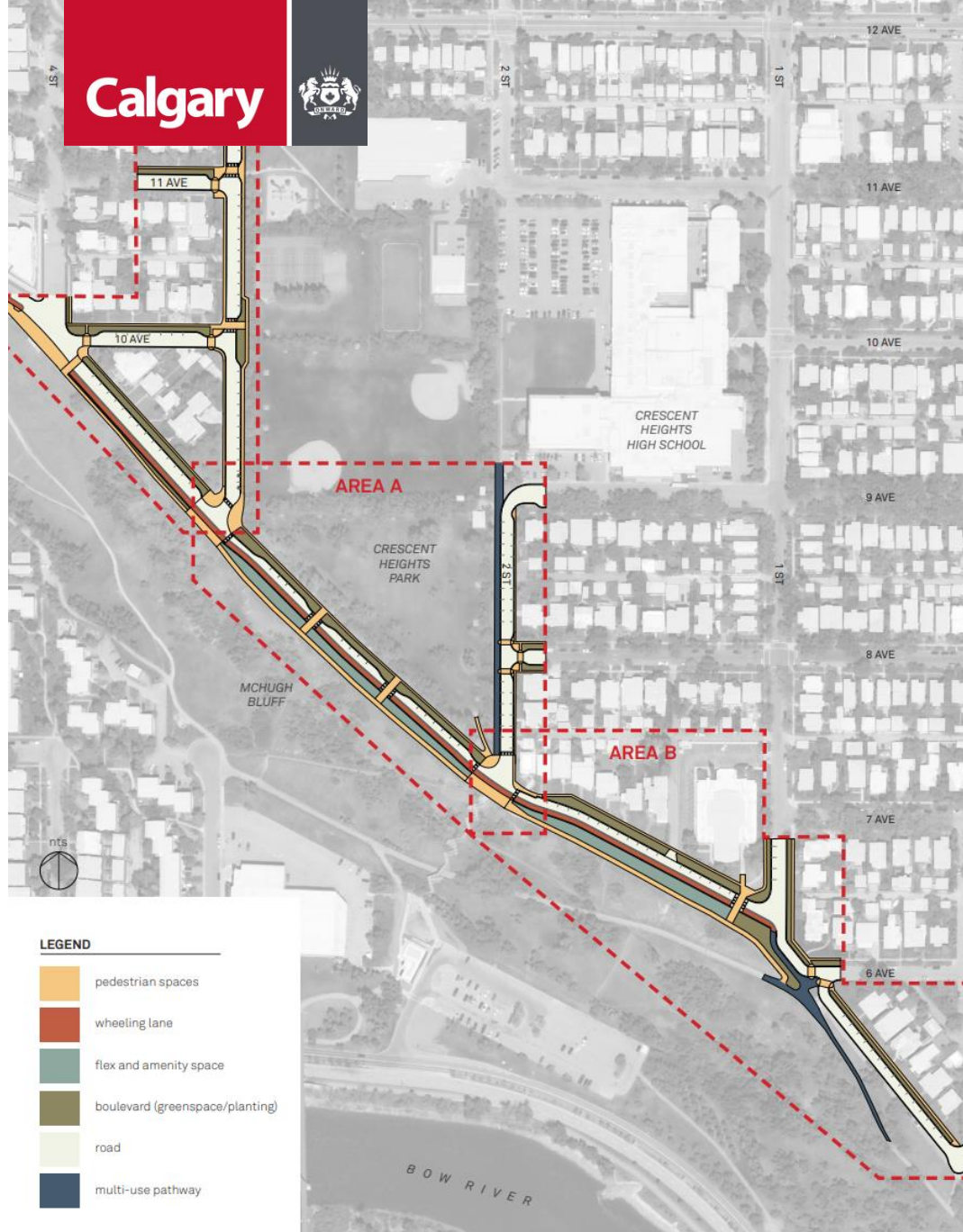
An open and transparent engagement process allows us to hear concerns and ideas shared by many in the community, as well as those that may get lost in the overall volume of responses.

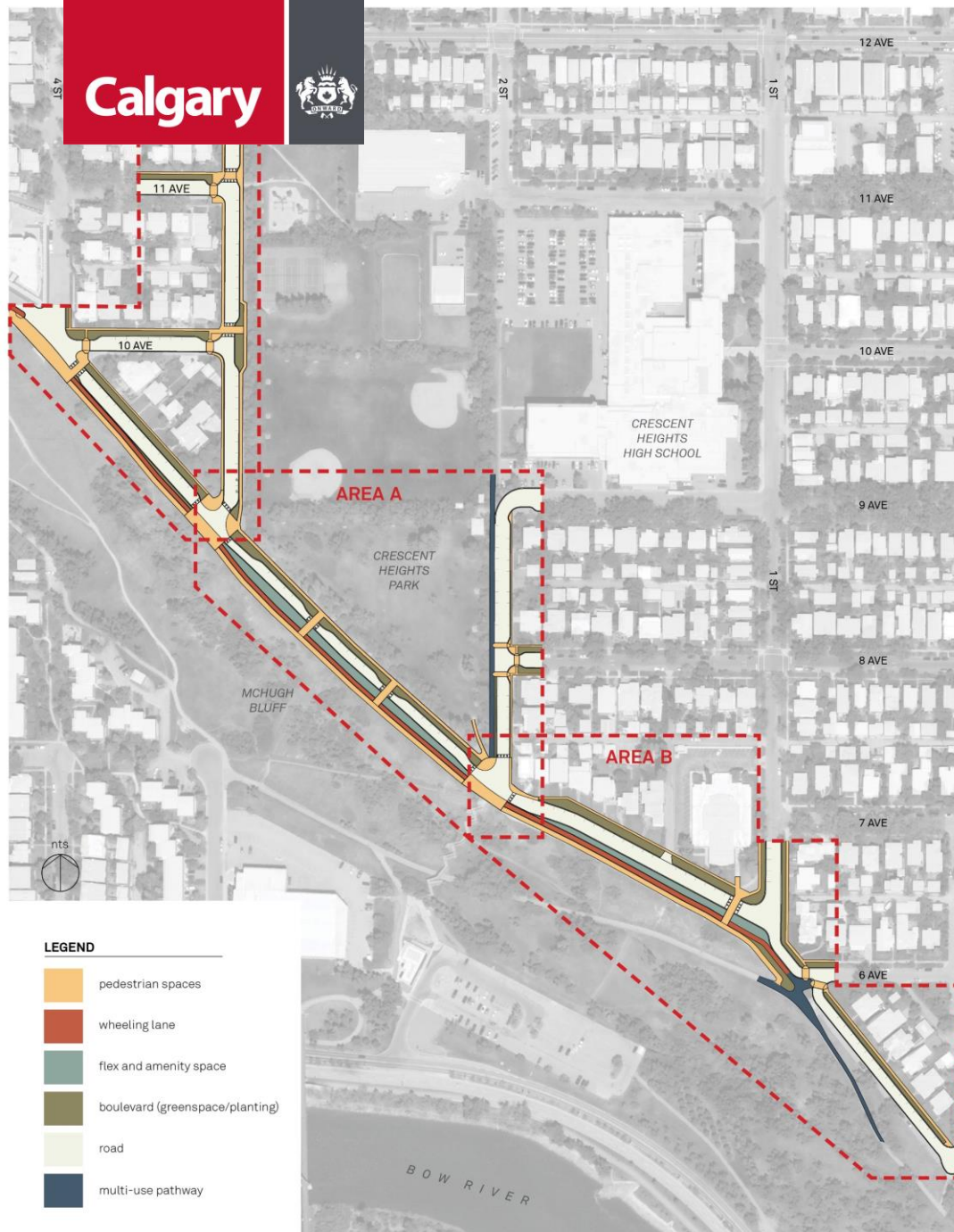
A detailed outline of **all** themes and how often they were heard will be provided in the full What We Heard report.

Design Option 1

What We Heard:

- **One-way traffic along Crescent Road is divisive.**
- **Traffic calming** in general is viewed as a **positive**
- There are **concerns about pushing traffic into community**
- **Raised crossings** are almost universally popular
- **Separation between non-motorized users** (walkers & cyclists) continues to be key
- **Integration of parking** along the park is appreciated





Design Option 2

What We Heard:

- **One-way / two-way** sections are **confusing** to some. Some discussion of **extended one-way** outside of the study area.
- **Paved pathway** along bluff is **divisive**.
 - **Pros** focus on better snow-clearing and accessibility. **Cons** focus mostly on off-leash, but also runoff and type of footbed for walking.
- Both commuter and leisure users prefer **more buffer** zone between people walking and wheeling.
- **Paired walking/wheeling** lane also made it seem like there was **less amenity space** or usable seating.

Design Option 3

What We Heard:

- **Positive** response to maintaining **two-way traffic access** throughout the area.
- **Chicanes** as a traffic-calming measure were viewed quite **positively**
- **Raised block** seen as positive when considered as **amenity space**.
- **Concern** that **angle parking** encourage people to hang-out in the spaces.
- Confusion about **overall amount** of parking change in the area.

LEGEND

- pedestrian spaces
- wheeling lane
- flex and amenity space
- boulevard (greenspace/planting)
- road
- multi-use pathway



Common Areas

What We Heard

- **Excitement for 2nd street Multi-Use Path** and interest in seeing how it and other walking and wheeling areas **connect** to larger network. Some concern about it taking park space or impacting parking.
- Appreciation for **traffic calming** at problem junctions.
- **Split on parking** – some see too much, others too little – as with other options.



Unique Insights

- **Comfort & Safety**

Active space with more users will be safer vs. More users creates more problems

- **Experience & Inclusion**

Lighting emerged as an appreciated element of the experience

- **Connectivity & Circulation**

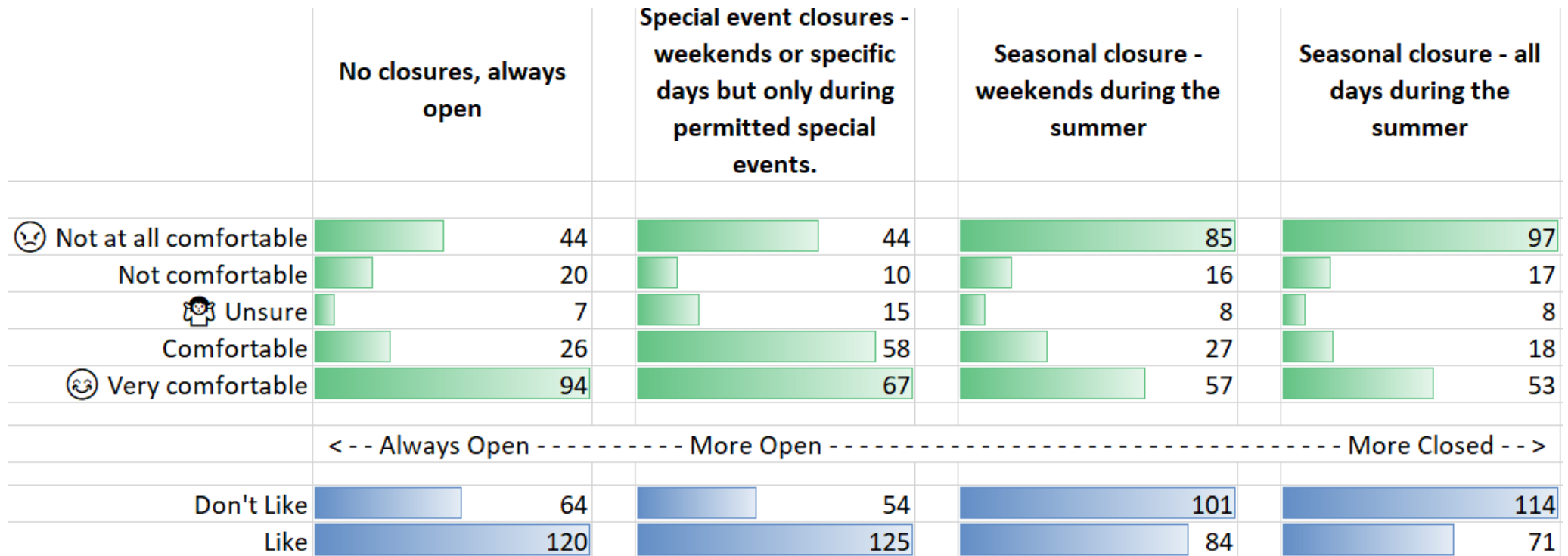
Traffic and walking / wheeling connections in equal measure

- **Activities & Amenities**

Emphasize views and natural environment

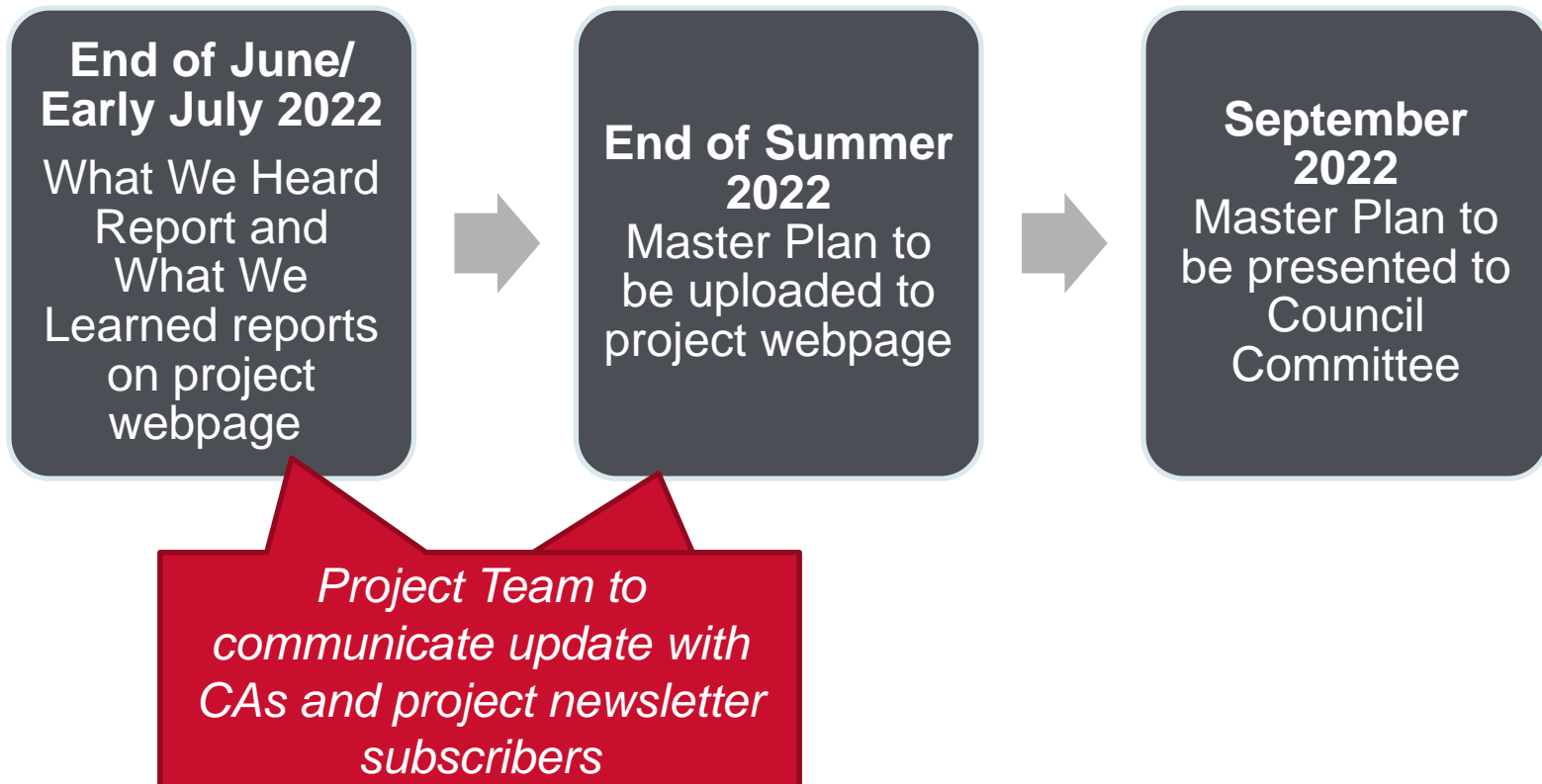
(*not the most commonly heard themes, but ones that offer unique insight)

What We Heard – Closure



Next Steps

- Project Team is finalizing the master plan concept, developing a cost estimate, and an implementation plan



Questions/Clarification

- Purposeful **dialogue** between The City and citizens and stakeholders to gather **information** to influence **decision making**.
- One of **many** possible **inputs** into decision-making.



Budget



Professional
Expertise



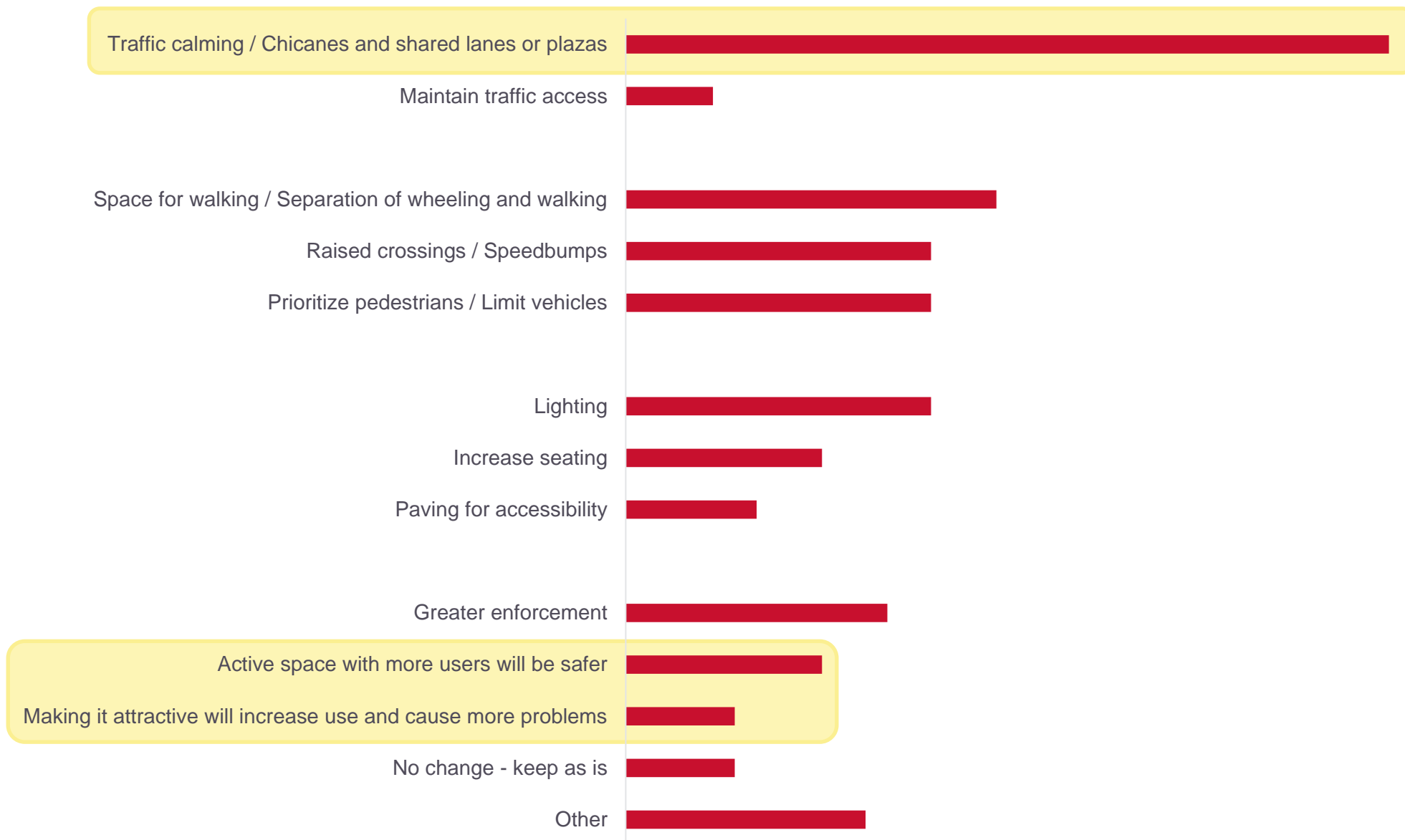
Community
Feedback



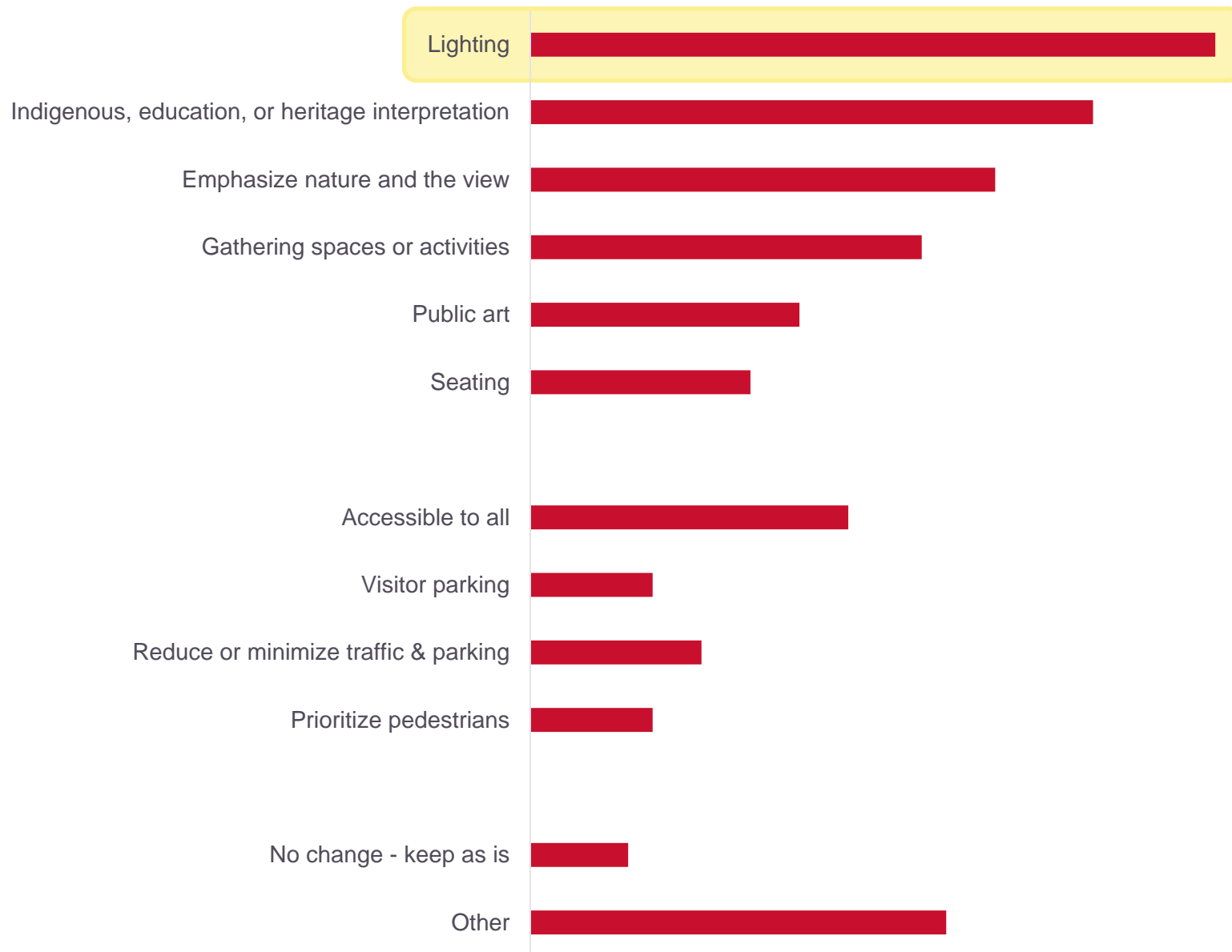
Policy &
Legislation

- Seeks to ***understand the why***, behind participants' ideas, interests, or positions.
- Provides opportunity for both **volume** of responses and **details** to be heard (*the many and the few*).
- Includes reporting back on **how feedback was used**, and if not, why.

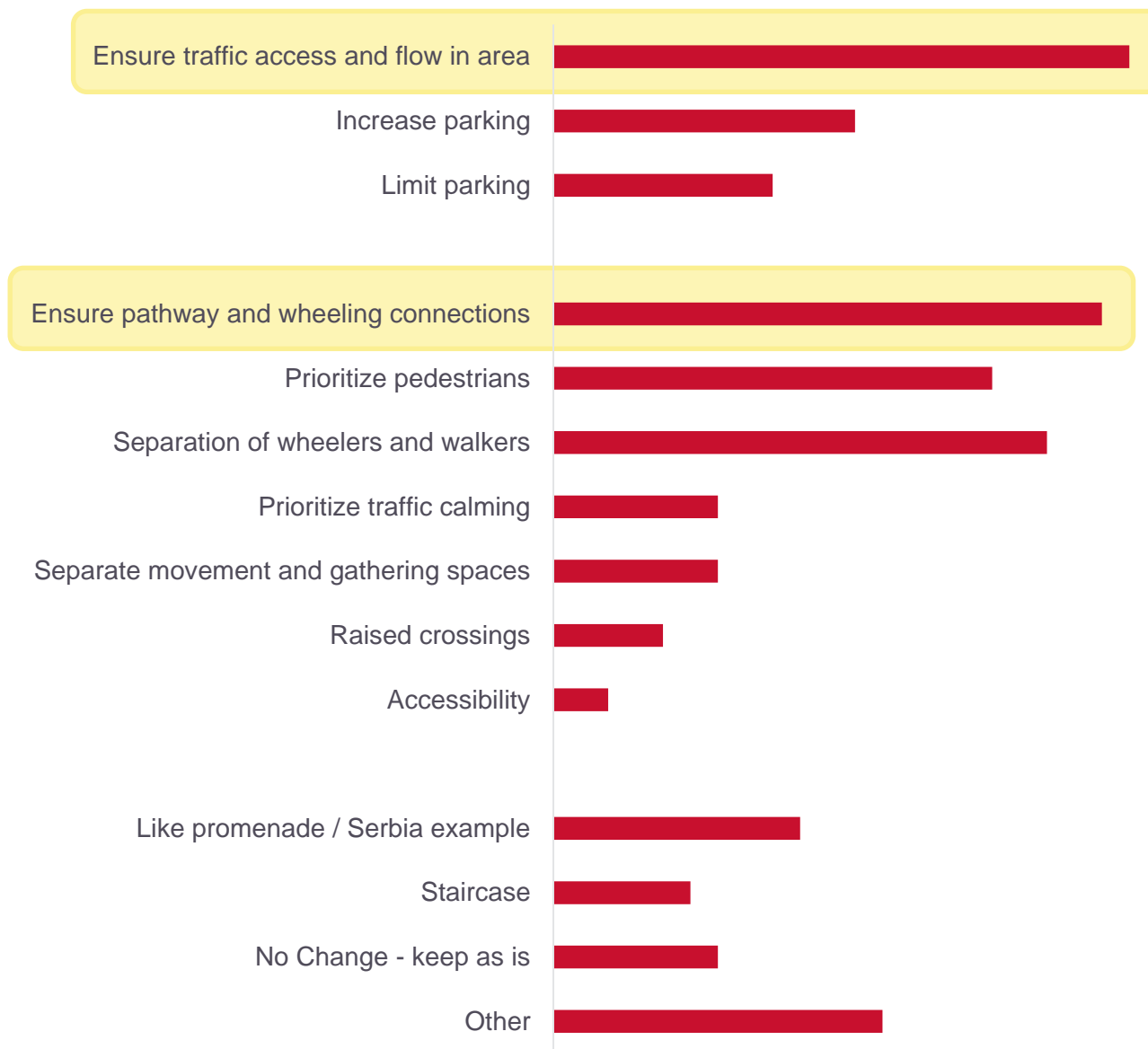
What We Heard – Comfort & Safety



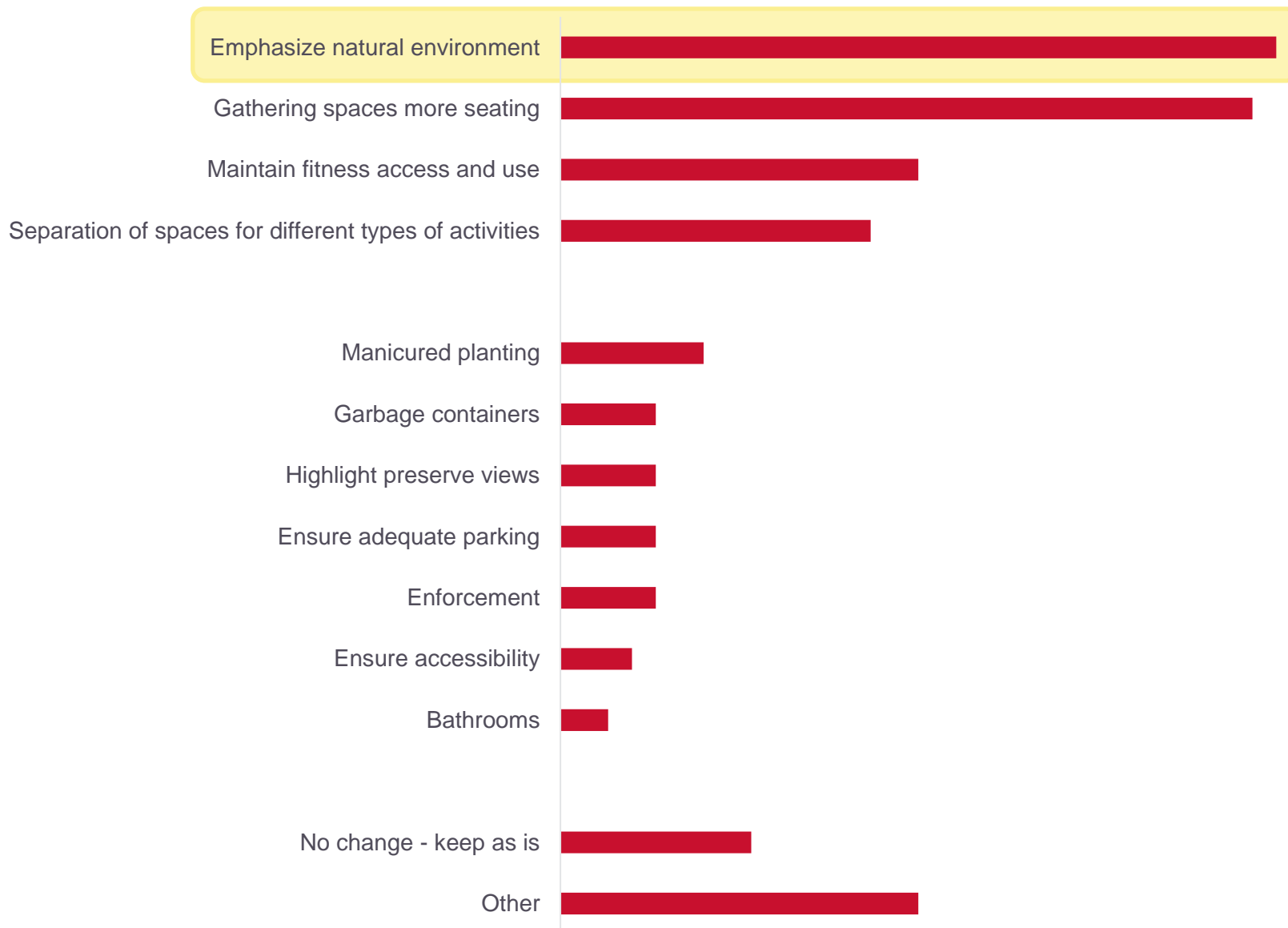
What We Heard – Experience & Inclusion



What We Heard – Connectivity and Circulation



What We Heard – Activities and Amenities



What We Heard – Closure

Is there any other type of short-term closure approach we should consider?

