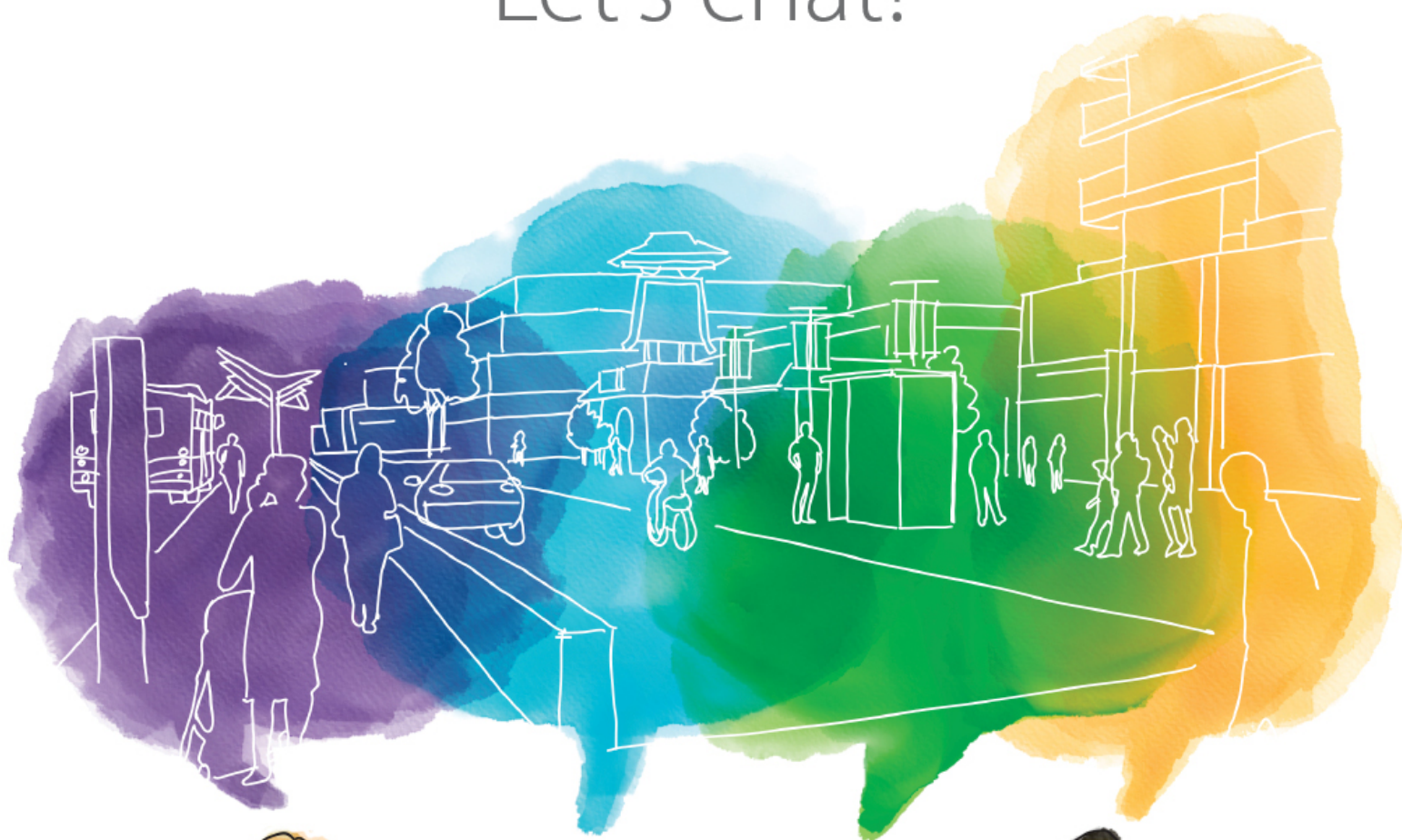


Your community's **past, present** and **future.**

Let's chat!





We need your input

Communities change and evolve over time

We're discussing growth, change and redevelopment in your community and the surrounding local area (including the communities of Albert Park/Radisson Heights, Applewood Park, Dover, Erin Woods, Forest Heights, Forest Lawn, Forest Lawn Industrial, Penbrooke Meadows, Red Carpet, Southview, 09Q, and a portion of Golden Triangle).

We need input from a broad and diverse range of people (from homeowners and renters, youth to seniors, singles, couples, families, those who are new to the area and those who have been here for a lifetime, local business owners and community groups) and anyone else who loves the area and is interested in how it could evolve over the next 30 years.

“Chúng tôi đang thảo luận về sự tăng trưởng, thay đổi và tái phát triển trong cộng đồng và khu vực địa phương của bạn. Chúng tôi rất muốn trò chuyện với bạn về tương lai của cộng đồng bạn. Vui lòng gọi cho chúng tôi theo số 311 và nhắc đến GFL nếu bạn muốn chia sẻ suy nghĩ của mình bằng Tiếng Việt.”

“نناقش النمو والتغيير وإعادة التطوير في مجتمعك ومنطقتك المحليين. يسرنا التحدث معك حول مستقبل مجتمعك المحلي. يرجى الاتصال بنا على الرقم 311 وذكر GFL إن كنت ترغب مشاركة أفكارك باللغة العربية.”

Your input and the input of your neighbours will help create a local area plan that will guide growth, change and redevelopment in the Greater Forest Lawn Communities.



Why do we need to discuss growth, change and redevelopment?

Over time, trees and kids grow up, businesses change ownership and offerings, homes and buildings age. People choose to move, renovate or rebuild their homes or businesses to better suit their changing needs.

There is a stage in each community's life cycle when the choice to rebuild or redevelop homes and buildings becomes more and more frequent (generally as homes and buildings reach 50+ years).

A lot of change within a short time can start to feel unpredictable or overwhelming. It's at this stage where it can be helpful to have a plan in place to guide decisions about how and where change and redevelopment makes sense in communities.

Creating a plan to help guide change within communities ensures that there's flexibility (for people looking to make changes and innovate), direction (to help guide development when change is proposed), and certainty (for residents to know how their community may change in the future).



Communities change and evolve over time.

We're creating a local area plan to help ensure change happens in the right ways in the Greater Forest Lawn Communities.

Planning for the future together

We're excited to connect with you. Working together, The City and citizens, community association representatives, business owners, builders and others will create a local area plan for the Greater Forest Lawn Communities area.

A local area plan outlines a future vision for the area, provides guidance on what growth makes sense where, and includes development direction that residents, landowners, builders and developers, city planners and Councillors can commonly refer to as new development ideas are proposed by property owners and landowners in the plan area.

"I've been very impressed with the positive, collaborative, and open process."

— FORMER LOCAL AREA
PLANNING PARTICIPANT



We need your input to help guide future change, growth and redevelopment in the area and in your community.

STEP 1

Review the information in this engagement booklet.

STEP 2

Respond to the questions at the back of this engagement booklet.

STEP 3

Tear out the comment page and drop it in the mail or provide input at calgary.ca/GFLplan





We need your input

Your input matters

This is your first of many opportunities to get involved. In this first phase, we are focused on looking back at the past, understanding the present and envisioning the future of the area. You can get involved in multiple ways in this first phase of engagement.

Let's chat!

- Review this engagement booklet, complete the comment form on the back page, tear it off and drop it in the mail by May 8.
- Provide your input online at calgary.ca/GFLplan by May 8.
- Join a virtual engagement session – check out the schedule at calgary.ca/GFLplan and register for a session.

Input collected through this phase of engagement will be used to create the first chapter of the local area plan, which outlines the area's history, highlights key features and amenities connected to the area as it exists today, and includes a vision and core values to help guide future decisions about growth, change and redevelopment in the future.

"I'm really grateful I had this opportunity to take input from the wider community and collaborate with such a diverse group of people."

— FORMER LOCAL AREA PLANNING WORKING GROUP MEMBER



We Want You!

Apply to join the Greater Forest Lawn Communities Working Group

Are you interested in participating in more in-depth discussions about the Greater Forest Lawn Communities with other community members?

Apply to join the Greater Forest Lawn Communities Working Group by May 8 online at calgary.ca/GFLplan.



We need your input

What is important for people to know about the area's history?

Share your thoughts on page 15.

PAST: the area's history and roots

When thinking of change within your community and the surrounding area, let's first look back in time at the area's history (Past), then we'll focus on the area as it exists today (Present) and lastly, we'll think about how the area could evolve over the next 30 years (Future).

All communities change, and we can see that clearly when we look back in time. Having a good understanding of an area's past helps us learn about, appreciate, and better understand the history of the area, its people and the influences that led to what we see today.

Did you know?



The Trans-Canada Highway - 17 Avenue SE

Seventeenth Avenue developed both as a highway and as the main street of Albert Park, Forest Lawn, and Hubalta. Each of these settlements had a post office and general store, presumably along 17 Avenue SE. In 1940, the province designated the route of Highway 1 (the Trans-Canada Highway) through Alberta, and it included this stretch of 17 Avenue SE. When the highway was upgraded in the mid-1950s, its route shifted away from the Greater Forest Lawn area's built-up area and was relocated to 16 Avenue NE. Seventeenth Avenue was redesignated as part of Highway 1A.

17 Avenue. Courtesy of International Avenue BRZ



Golf Course by the River

The western portion of Southview was once part of Major James Walker's farm. This portion became divided between the Militia Department's rifle range and the nine-hole Colonel Walker Golf Club, which was established in 1927. When the department evacuated the rifle range in 1930, the golf course leased the site and became an 18-hole course. It was renamed the Inglewood Golf Course in 1932.

1935 Aerial view of Inglewood Golf Course.
Courtesy of Glenbow Archives

Having a good understanding of an area's past helps us learn about, appreciate, and better understand the history of the area, its people and the influences that led to what we see today.



St Lukes Anglican Church

The St. Luke's Anglican Church, a 1914 landmark built on the north side of 17 Avenue SE in Albert Park and later moved across the street to 3027-17 Avenue SE in what is now Southview. There, St. Luke's Hall was built next door. When St. Luke's moved away from its 17 Avenue SE location in 1960, the little church and hall became Calgary's first mosque. The pair of buildings have since been demolished.

St. Lukes Anglican Church. Courtesy of Glenbow Archives

"To understand where we are going as communities, we need to understand the historical foundations of our communities. The people, places and events of past inform our collective understanding of who we are and how we will continually evolve as we shape our future together."

— CITY PLANNER



PRESENT: the area as it exists today

Understanding the area as it exists today – including what people love and what people would like to see change – helps inform how things could change and evolve in a way that integrates with what already exists and improves aspects that may need a little love or investment.

Over the past few years, we've been spending more time than ever in our communities. Looking at the map below, think about what you love about your community and surrounding area and what isn't working well.

Communities are made up of people and places. To better plan for communities and their evolving future, we need to hear from a range of community experts – the people who know and understand parts of a community best. The knowledge you share will help inform the foundations of your local area plan. We can't wait to hear from you!

— CITY PLANNER

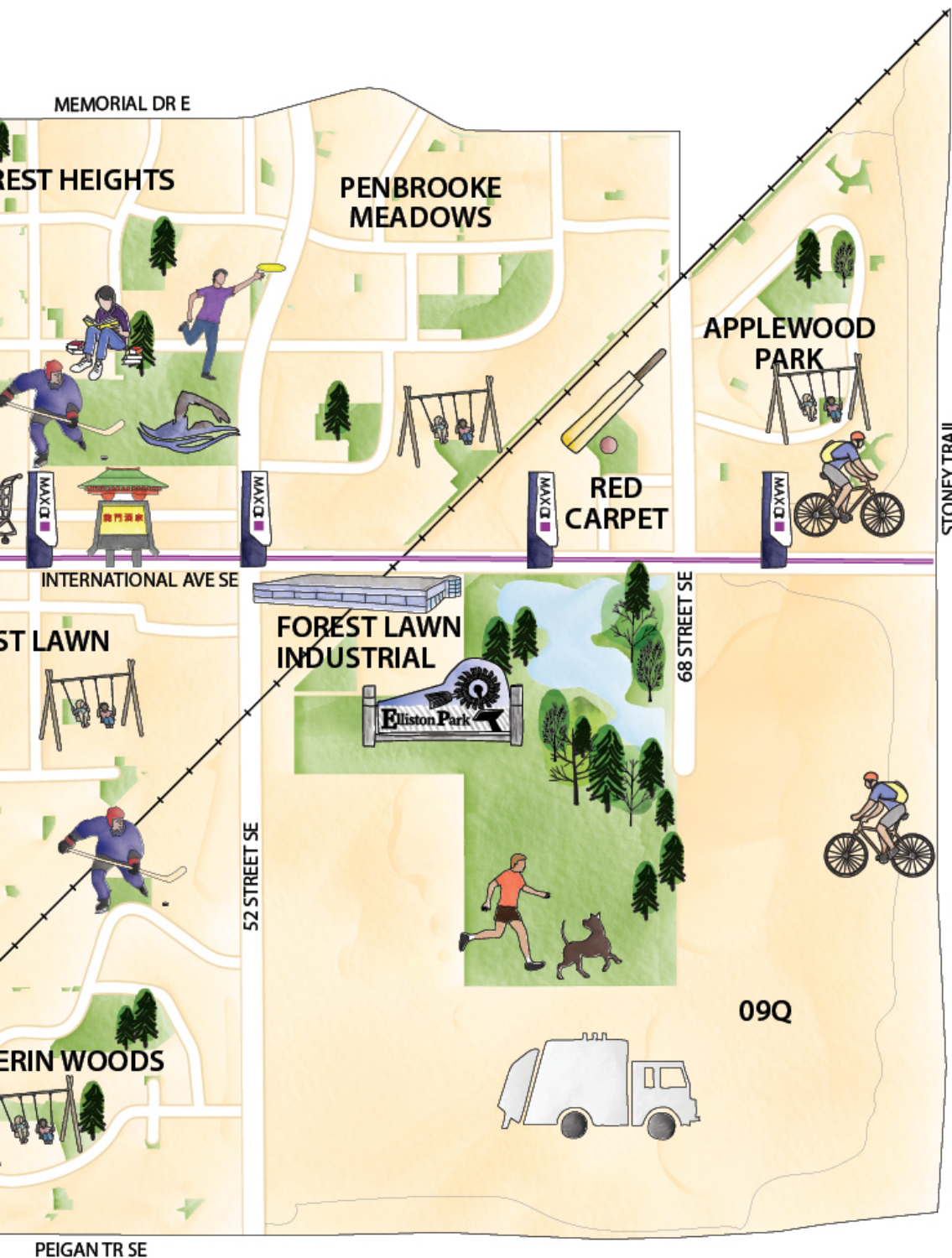




We need your input

What do you love about the area and your community and why? What are the challenges your area is facing and why?

Share your thoughts on page 15.





We need your input

What's important to you and for future generations when thinking about how the area could evolve?

Share your thoughts on page 15.

FUTURE: the next 30 years

Community change and evolution is often gradual, but many small changes can have a big impact over the long term and having a local area plan in place to guide change and redevelopment helps ensure individual changes contribute towards a bigger picture plan.

The wants and needs of this generation are different from the last and will be different from the next. We know that things will naturally adapt and change in response to people's changing needs, but having a better understanding of current and future needs is key to how we plan and where we go as communities.

What is important to you and for future generations when thinking of how the area and your community could evolve?





"As the demographics are changing, are there plans for residence (something other than what we have right now) for seniors? Is there something like that that could be considered for the plan area main corridors? In the heart of our neighbourhood would be amazing – the diversity of housing that could meet the needs of seniors as an example."

— CITIZEN



Learn more and stay connected

Let's chat! Your input will help inform and influence the Greater Forest Lawn Communities Local Area Plan that will provide direction on where and how it makes sense for your community and local area to change and evolve.

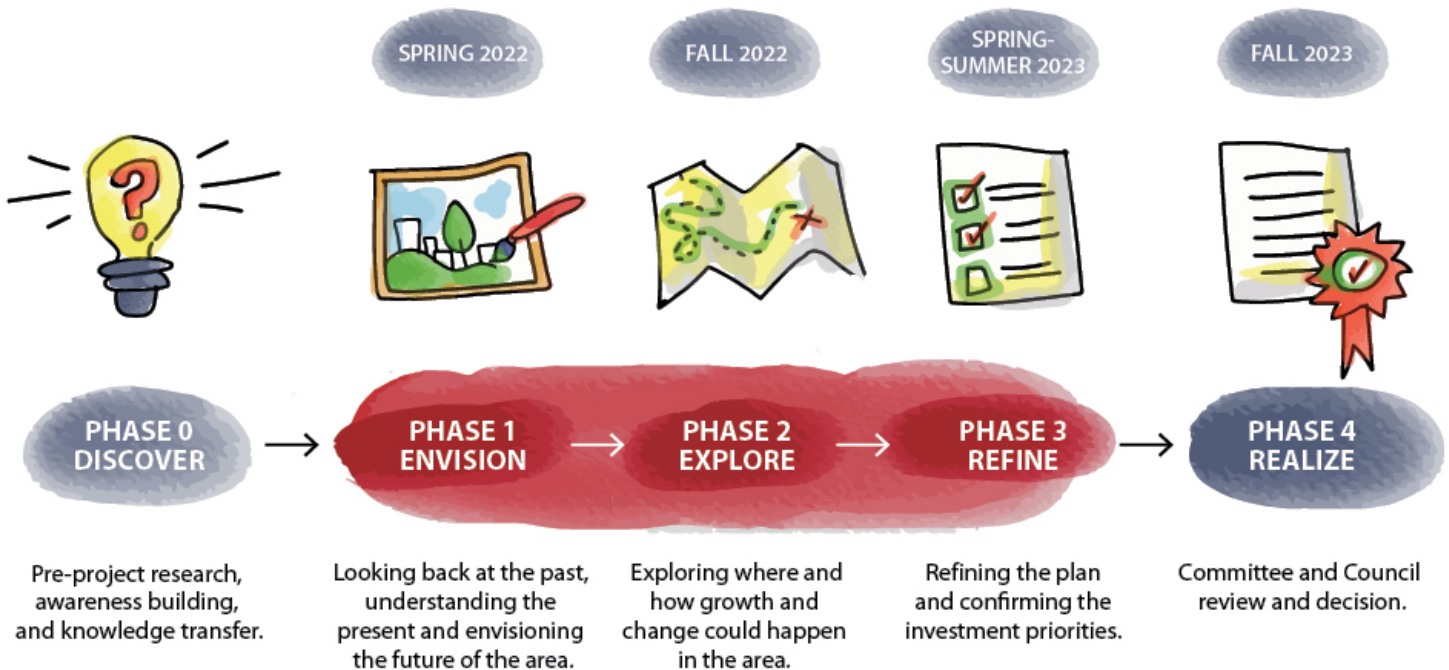
You have insights and ideas that are important as we discuss the evolution of your community and create a local area plan to help guide future growth and change. Get involved and stay connected.



We need your input

What's important to you and for future generations when thinking about how the area could evolve?

Share your thoughts on page 15.



Visit our webpage

calgary.ca/GFLplan



Join our email list

calgary.ca/GFLsubscribe



As we work together, your input will help inform a local area plan that will provide direction on where and how it makes sense for your community and local area to change and evolve.



We need you!

Get involved: Apply to join the working group

Are you passionate about helping shape your community for you and future generations? Are you interested in working with fellow citizens, community association members, local builders/developers and city planners to discuss growth and change in the Greater Forest Lawn Communities?

What is the working group?

The working group includes people from a range of backgrounds who provide feedback, consider input provided by the broader community, and discuss concepts and ideas with city planners as the local area plan is created.


The working group will participate in 7 – 8 focused workshops over approximately 2 years.

Who can apply for the working group?

We're looking for a broad range of people to join the working group, including:


- Local residents including long-term or new homeowners and renters (balance of youth, young professionals, families, singles and seniors).
- People who work in the area.
- People who own property in the area.
- Local business owners.
- Members from the development industry.
- Community users (from a recreation or customer perspective).
- Education, Faith, Environmental, Cultural or Advocacy group members in the area.

Apply now until May 8 at calgary.ca/GFLplan




"I got to meet so many great people from surrounding communities and have some really interesting discussions with them and The City."

—FORMER LOCAL AREA PLANNING
WORKING GROUP MEMBER



"Looking forward to the next session and further discussion."

—LOCAL AREA PLANNING WORKING
GROUP MEMBER



"Thanks for a great session today. Excited to see where this goes."

—LOCAL AREA PLANNING WORKING
GROUP MEMBER



1. Past

What is important for people to know about the area's history? (i.e. significant people or places, heritage).

4. Rank Ideas 1-8 (1 = high priority, 8 = low priority). Share any thoughts you have about how or where these ideas could happen in the area.

a. Promote housing options that are varied, inclusive and affordable. How or where?



b. Provide opportunities to access goods, services and amenities close by. How or where?



2. Present

Over the past few years, we've been spending more time than ever in our communities. What do you love about the area and your community and why? What are the challenges your area is facing and why?

c. Offer opportunities to gather and participate in civic, arts, cultural and entertainment activities, in both public and private spaces. How or where?



d. Provide varied and inclusive spaces and facilities for recreation, play and outdoor activities close by. How or where?



e. Provide spaces that foster a sense of place and are designed for everyone. How or where?



3. Future

What's important to you and for future generations when thinking about how the area could evolve in the next 10-30 years and why? (Think of specific topics such as housing, connectivity (bike, transit, vehicle), sustainability and/or specific locations within the area (community gathering spaces, libraries etc.)

f. Ensure natural areas, biodiversity and ecological functions are protected, restored and enjoyed. How or where?



g. Enable and support prosperity through diverse economic opportunities at a variety of scales. How or where?



h. Support the use of existing streets, services and buildings to reduce the need for new infrastructure. How or where?



We need your input



Greater Forest Lawn Communities
Local Area Planning Project

Share your thoughts

STEP 1

Review the information
in this engagement booklet.

STEP 2

Respond to the questions
at the back of this
engagement booklet.

STEP 3

Tear out the comment page,
and drop it in the mail by
May 8, 2022.



CANADA	POSTES
POST	CANADA
Postage paid if mailed in Canada	
Business Reply Mail	Port payé si posté au Canada
	Correspondance- réponse d'affaires
0003214176	01



1000010077-T2P2M5-BR01



CITY OF CALGARY
MAIL CODE 8305
PO BOX 2100 STN M
CALGARY AB T2P 9Z9

