

# 2 Street SW Renderings



2 Street SW - Station Perspective Looking South.



2 Street SW - Waterfront Streetscape Perspective Looking South



# Downtown Portal - What Might It Look Like?

The downtown portal provides an opportunity to redefine how we think about infrastructure in our city. It has the potential to contribute to our public space in meaningful ways as well as support surrounding businesses by being engaging and accessible.

## Inspiration Images

Elements from various projects were used as inspiration to re-imagine the portal design.



Centro Stazione Park, La Spezia, Italy

A simple, yet playful design application for a portal.



The Goods Line, Sydney, Australia

An example of stepped seating that could be integrated into the portal.



A grand staircase that could be used for place-making, with commercial programming underneath.



High Line, New York, USA

An example of the integration of an urban park with infrastructure.



Wembley Park, London, England

A public, interactive art installation used to engage pedestrians and light the public space.



Sykkel Bike Hotel, Lillestrøm, Norway

An example of public infrastructure that can also provide amenities, such as bike parking.



4 Street SW Underpass, Calgary, AB

Public art used to activate the spaces around infrastructure.



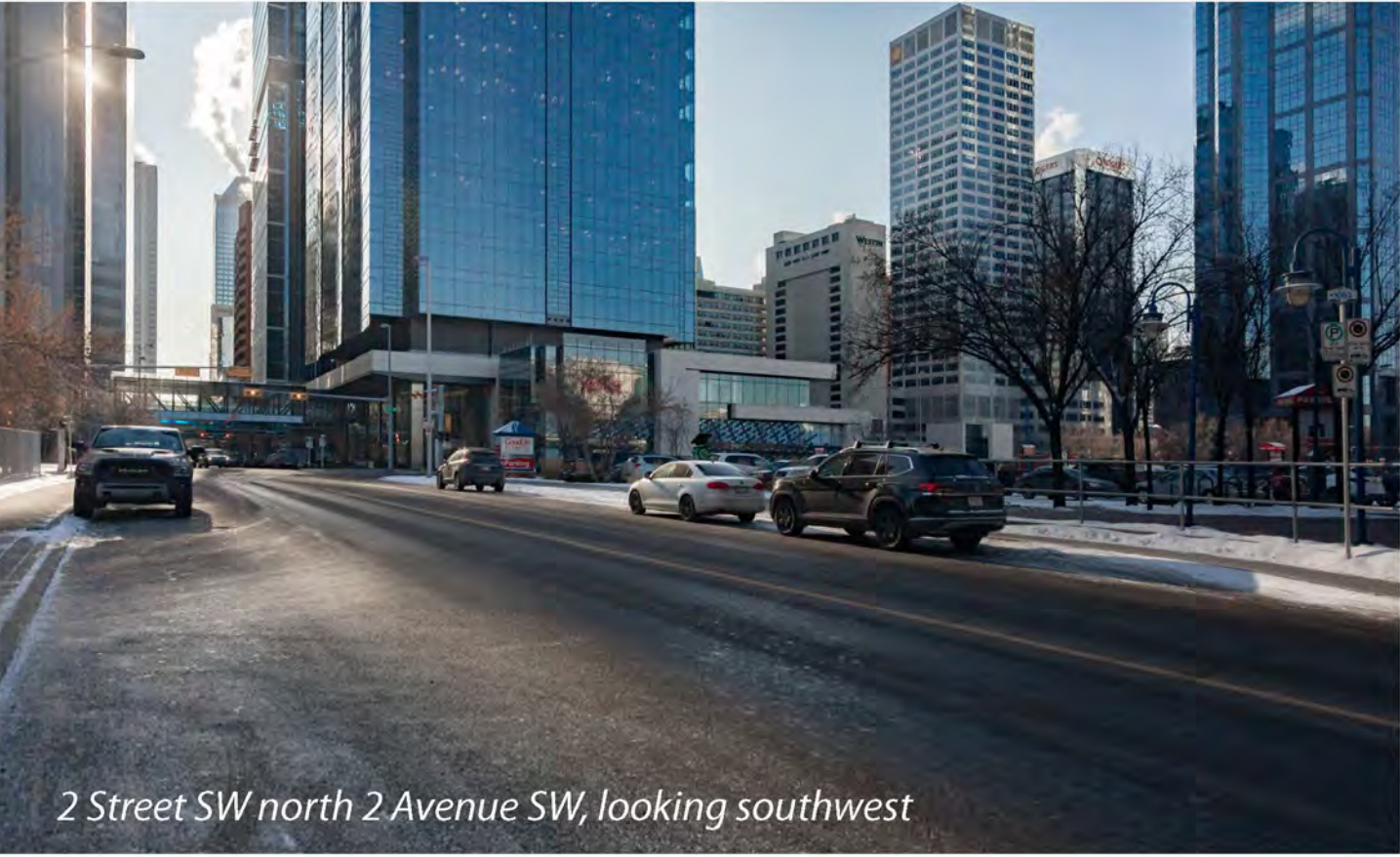
Irish Hunger Memorial, New York, USA

An example of integrating lighting into the overall design.

## Initial Concept

In its simplest form the portal could create a new public gathering space at 3 Avenue SW.

### Before



### After



Use of different materials, textures or lighting could be integrated into the portal structure to make it visually interesting.

Landscaping can be used to soften the interface between the portal and 2 Avenue Station.

The portal could be used to provide a stepped seating plaza at the south end of the portal.



# Downtown Portal - What Might It Look Like With Additional Partnership?

## Other Possibilities

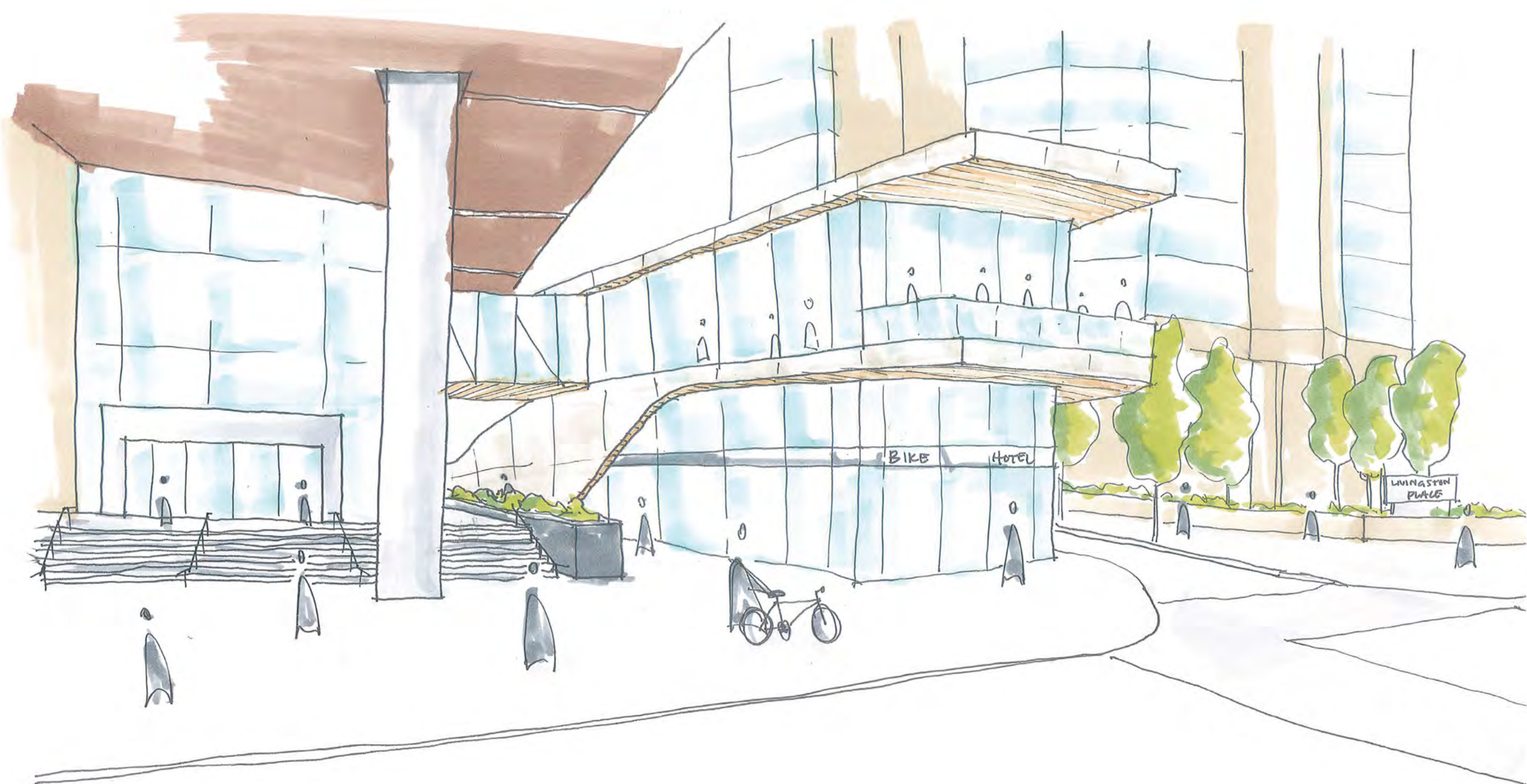
The portal can become a unique, public place-making opportunity. Through public-private partnerships the portal could be developed to a greater potential by providing amenities to enhance the quality of life for people commuting and living downtown.



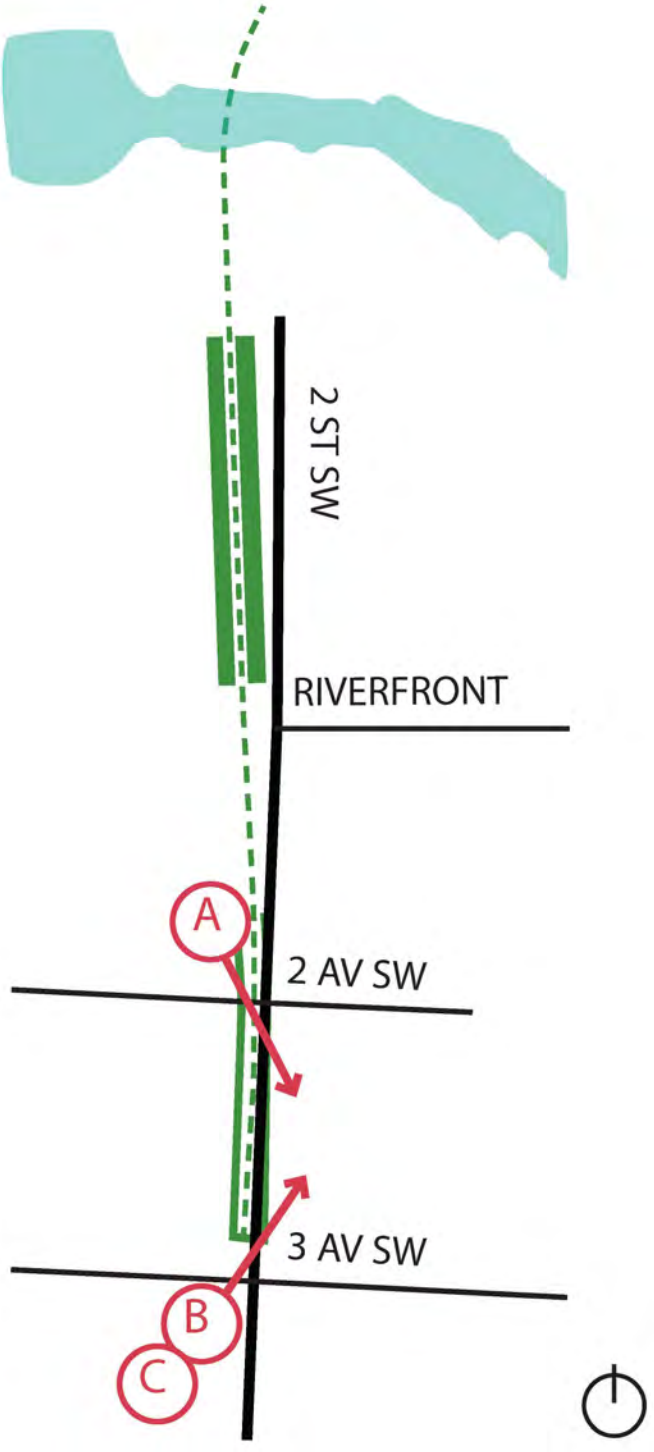
**View A:** Rethinking the +15 with the creation of an elevated, urban garden that takes advantage of the portal infrastructure and turns it into parkspace. This option would require a public-private partnership to build.



**View B:** Using the portal infrastructure to connect the street with the + 15 network, and create an interesting stepped plaza space along the street.



**View C:** Creating new real estate opportunities above the portal, such as coffee shops, bike parking or other commercial uses. This option would require a public-private partnership to build.



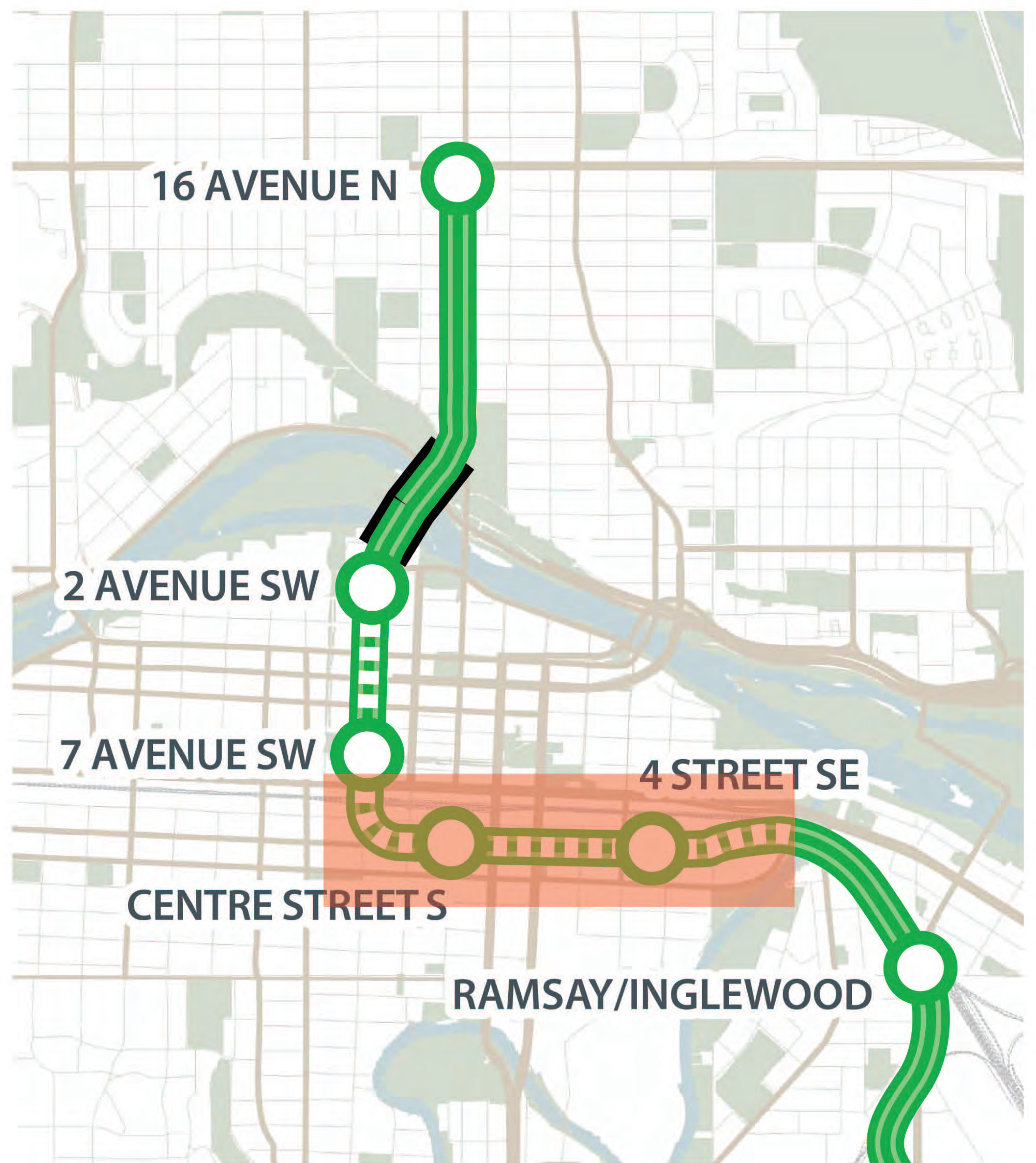
Key plan for views



# Beltline

## Stakeholder interests we've heard

- Minimize impact to mobility network
- Minimize impacts to future development densities
- Avoid impacts to existing developments: access, egress, servicing
- Support Rivers District and Stampede Masterplans and Events Centre planning
- Locate transit infrastructure to service existing Beltline communities
- Integrate station entrances with development



## Planning & design objectives

- Minimize impacts to the mobility network
- Locate station to support the vision of the Rivers District Masterplan
- Minimize disruption to Victoria Park Transit Centre operations
- Minimize impacts to Stampede Park and existing residential and commercial properties
- Explore opportunities to integrate station entrances into development
- Enable future development opportunities and unlock density potential