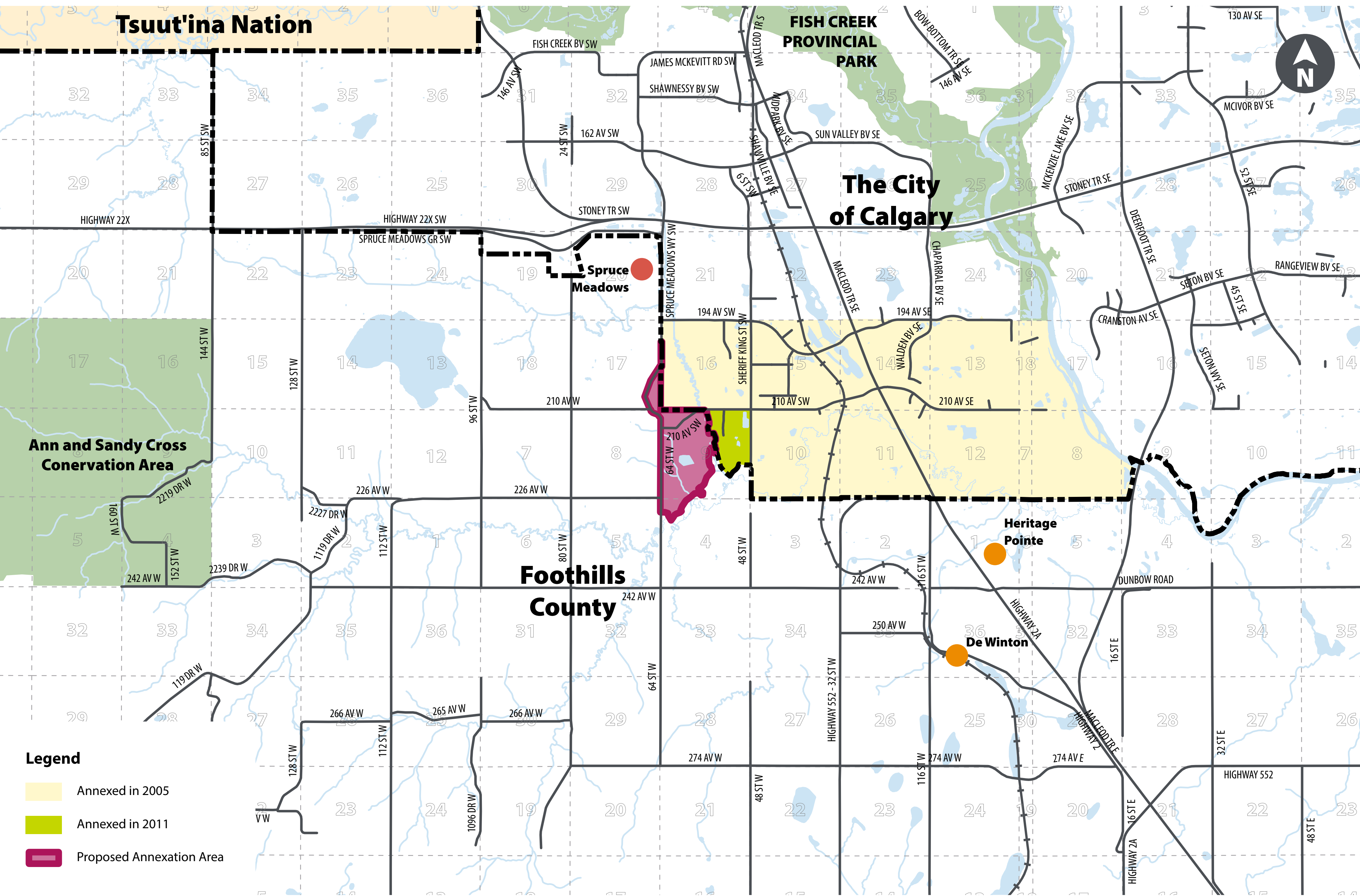




Previous annexations between municipalities



2004 annexation

- Calgary received 8 sections of land from Foothills to accommodate growth.

2011 annexations

- Foothills annexed land from Calgary near Spruce Meadows.
- Calgary agreed to annex land from Foothills’ Sirocco Area Structure Plan. This land is now actively being developed as part of the new Pine Creek community in Calgary.

In partnership with





Calgary’s initiation of annexation

2021



March 2021

City of Calgary Council directed Administration to proceed with annexation.

May & June 2022

The City of Calgary sent a letter of intent to annex lands to Foothills County and other interested parties

December 2022

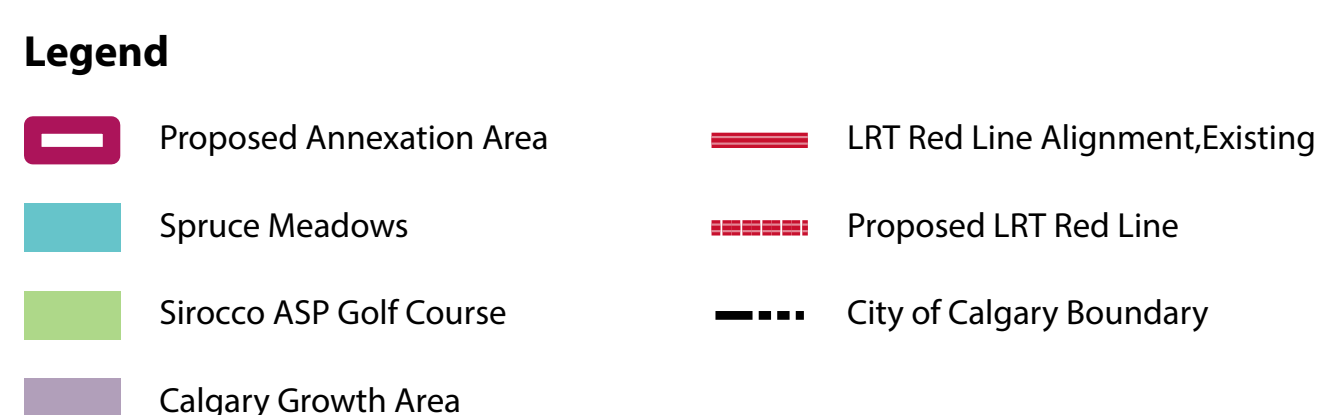
The Foothills–Calgary Annexation Negotiation Committee held its first meeting.

In partnership with



A wide panoramic view of a green, rolling landscape under a clear sky. In the foreground, there are dense green trees and bushes. The middle ground shows a grassy hillside with a line of trees. On the right side, a large, light-colored building with a dark roof is visible, surrounded by trees.

1. Allow for future urban development contiguous with Calgary's developing communities.
2. Provide opportunities for mutual cooperation with Foothills County; e.g., address road issues.
3. Fulfill Calgary Council direction to initiate this annexation with Foothills County, which passed on March 15, 2021.

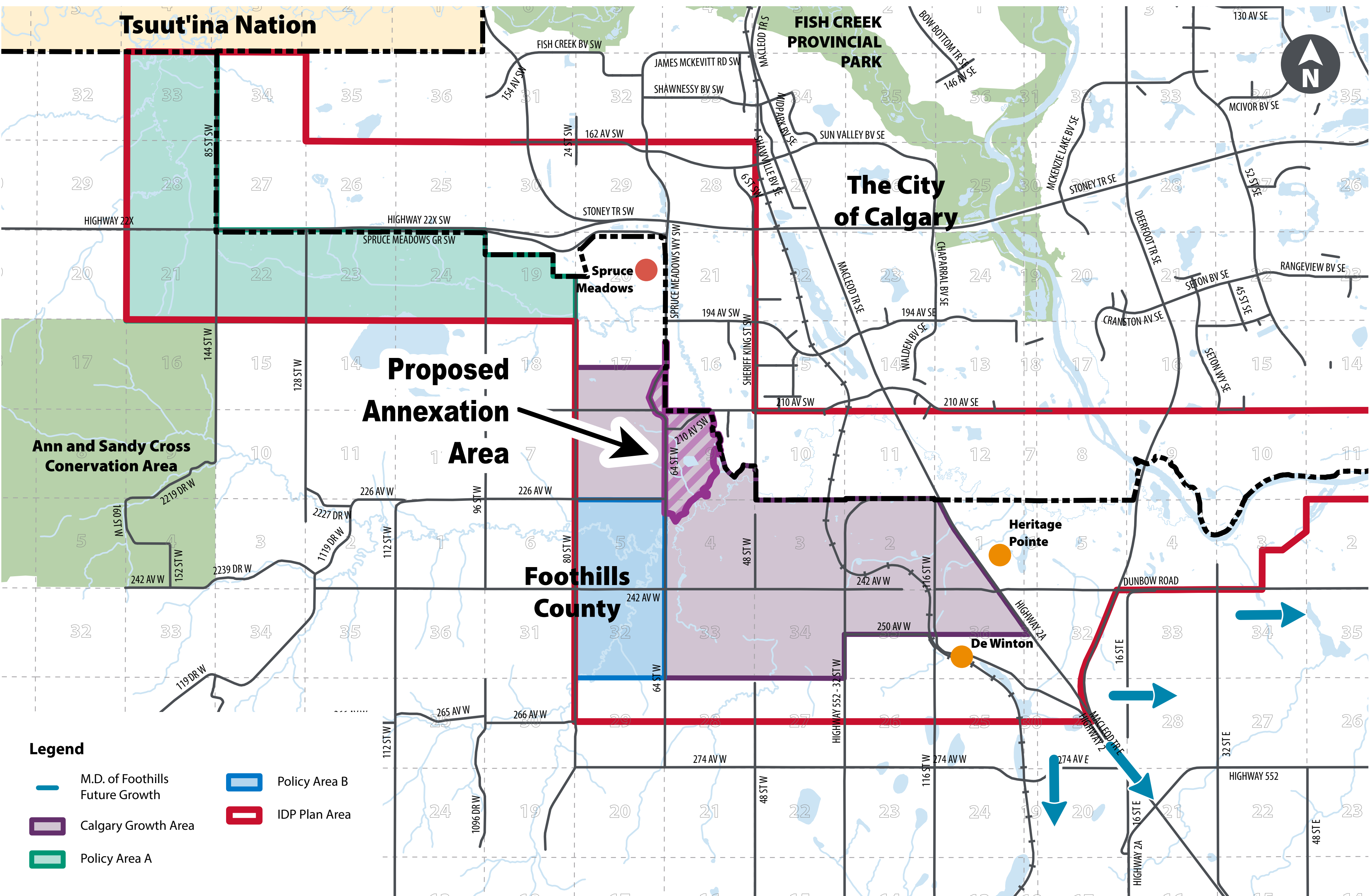




Our shared boundary

In 2016, Foothills County and The City of Calgary jointly adopted an Intermunicipal Development Plan (IDP), which identifies growth areas for both municipalities.

The proposed annexation area falls within the Calgary Growth Area policy area. The City of Calgary does not plan for a comprehensive annexation of the whole Calgary Growth Area.



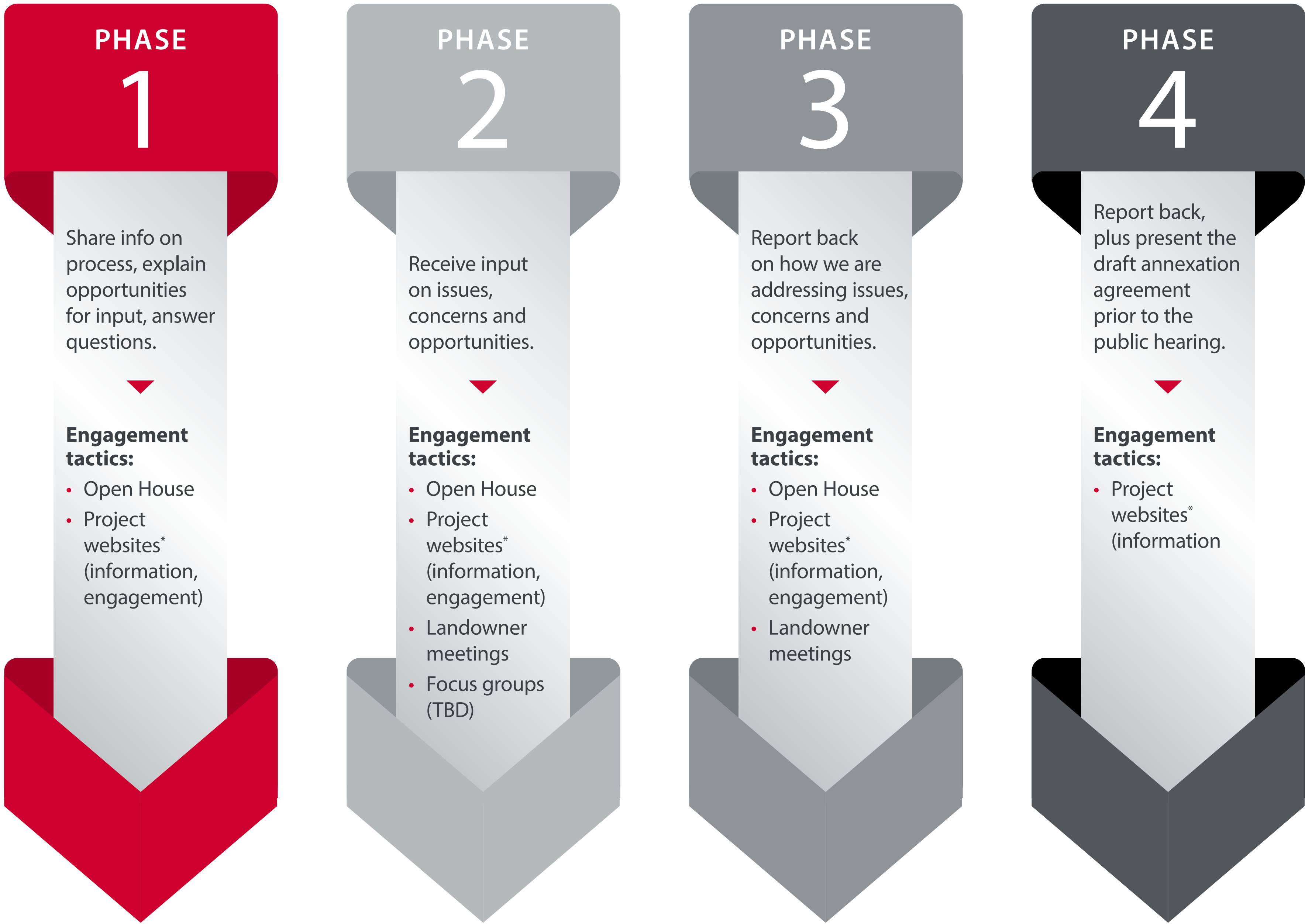
In partnership with





The consultation process

There will be several opportunities for you to provide us with input throughout the annexation process.



*Project websites = City of Calgary and Foothills County project pages

In partnership with





Addressing your feedback

We will use the knowledge gained from your input to understand concerns, frame future conversations at the Annexation Negotiation Committee (ANC) and inform our engagement.

Summarize
input from the
public, landowners,
local authorities,
and others.



All matters that are raised through the engagement process will be presented to the Annexation Negotiation Committee to inform negotiations.

In partnership with





Please provide your input

The following boards will guide you through a series of questions. Please share your thoughts, concerns and/or questions directly on the panels using the stickies provided.

The questions are:

1. What are your concerns with Calgary annexing these lands?
Please tell us why.
2. What do you see as the benefits of Calgary annexing these lands? Please explain.
3. What do you think about the annexation area? Please provide area-specific observations or concerns.
4. What other questions do you have about the annexation process?

Please proceed to the boards and leave us your comment(s). **Thank you!**

In partnership with





Question 1.

What are your concerns with Calgary annexing these lands? Please tell us why.

Post stickies here

In partnership with





Question 2.

What do you see as the benefits of Calgary annexing these lands? Please explain.

Post stickies here

In partnership with





Question 3.

What do you think about the annexation area (referencing the map)? Please provide area-specific observations or concerns.

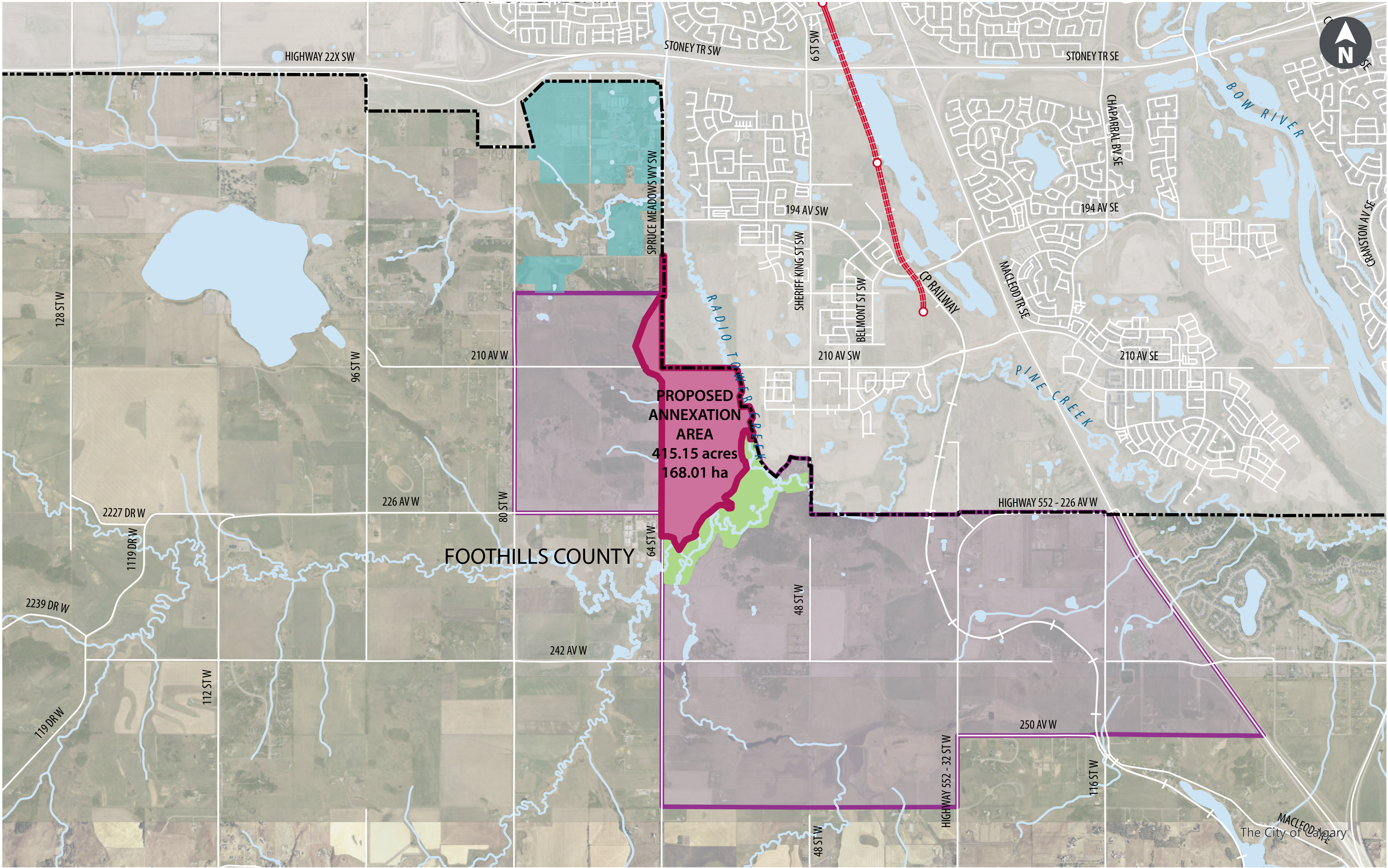
Post stickies here

In partnership with

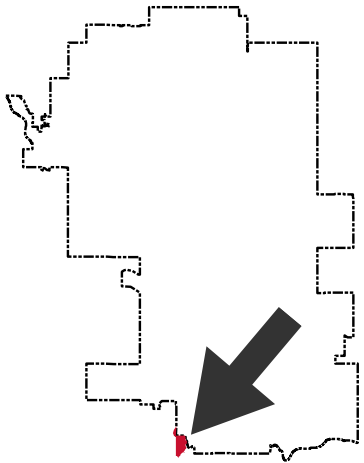




Proposed annexation area



- Legend**
- Proposed Annexation Area
 - Spruce Meadows
 - Sirocco ASP Golf Course
 - Calgary Growth Area
 - LRT Red Line Alignment, Existing
 - Proposed LRT Red Line
 - City of Calgary Boundary



In partnership with





Question 4.

What other questions do you have about the annexation process?

Post stickies here

In partnership with





Input opportunities

Respond to the questionnaire

Paper forms are available tonight, and can also be found at **calgary.ca/fcla**

Open House #2 (date to be confirmed)

Facilitated discussions to collect issues and concerns on the annexation and provide an update on the progress of negotiations.

Focus groups (to be determined)

The City and County may hold focus groups on specific topics (e.g. servicing, property taxes, etc.)

One-on-one meetings

The City and County may meet with those who are impacted by the annexation to understand issues

Email the project contacts

Natalia Zoldak – **foothillsannexation@calgary.ca**

Julie McLean – **julie.mclean@foothillscountyab.ca**

In partnership with





How to stay informed

- Go to The City's engage page for up-to-date information, or to subscribe for email updates on the project: **calgary.ca/fcla**
- Visit Foothills County's webpage for up-to-date information: **foothillscountyab.ca/development/current-county-projects/foothills-land-annexation**
- Foothills landowners in the proposed annexation area and within 1.6 kms of the proposed annexation area will receive mail updates from The City.
- Contact: Natalia Zoldak – **foothillsannexation@calgary.ca**
Julie McLean – **julie.mclean@foothillscountyab.ca**
- For more information, please scan the QR Code below:



In partnership with

