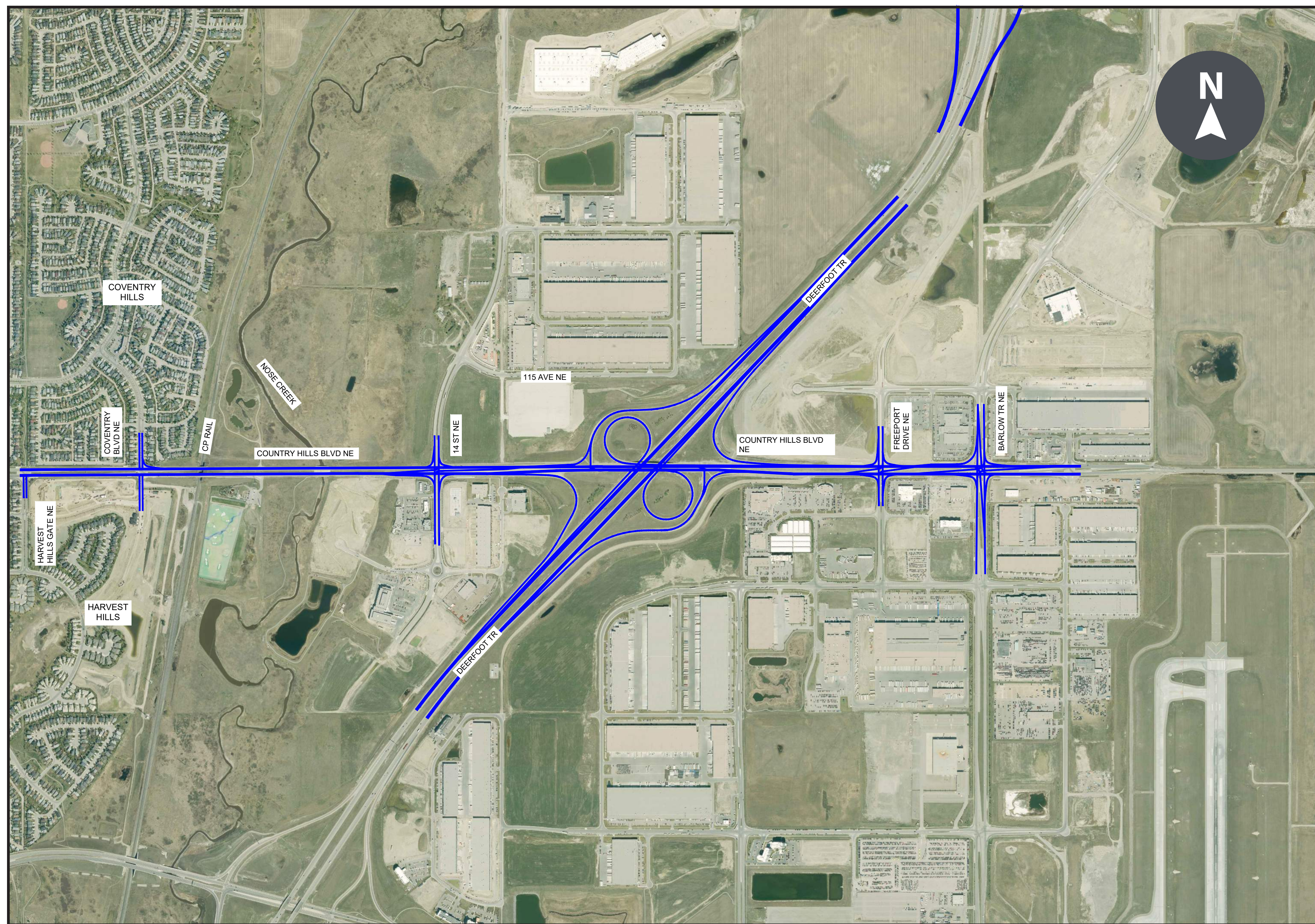


# Welcome

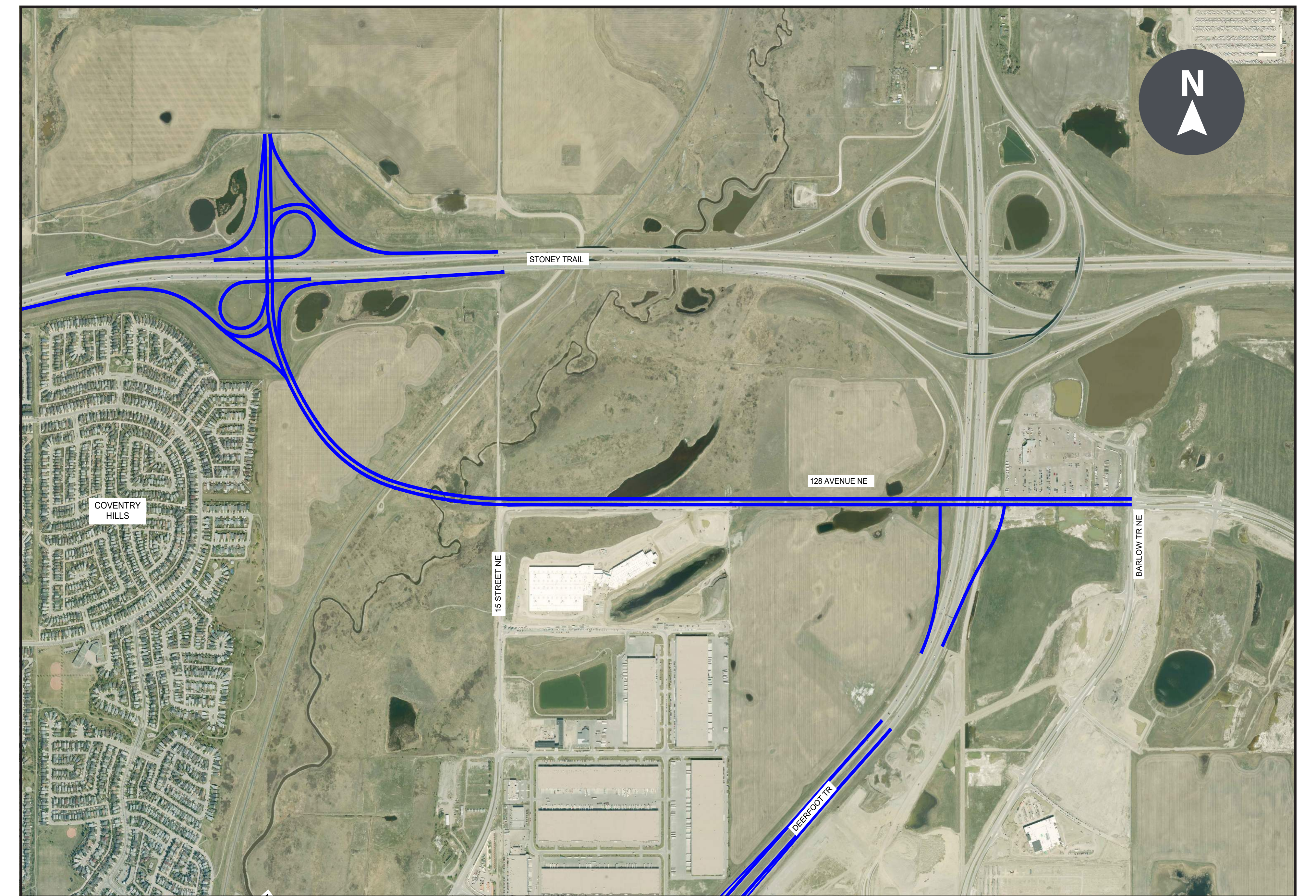
## Country Hills Boulevard N.E. Study Area



### Objectives

- Develop widening plan along Country Hills Boulevard N.E. between Deerfoot Trail and Coventry Boulevard N.E. from four to six lanes, including continuous multi-use pathways.
- Examine widening strategies for existing bridges over CP Rail, Nose Creek and Deerfoot Trail.
- Better accommodate and improve safety for both current and future travel modes in the study area.

## 128 Avenue N.E. Study Area



### Objectives

- Plan for a new connection for 128 Avenue N.E. between Barlow Trail and Stoney Trail that will accommodate all modes of transportation.
- Review previous interchange plans at both Deerfoot Trail and Stoney Trail.
- Examine new crossings over CP Rail and Nose Creek.
- Incorporate safety best practices considering all travel modes within the study area.



# Study Process



Gather and review available project information

Conduct existing conditions studies



Develop design concepts and conduct preliminary / initial evaluation



Final review and evaluation



Develop preferred study area plan

Submit for City approval process

Discover ideas, opportunities, challenges and develop evaluation criteria for the study area with stakeholders and the public.



Review stakeholder and public feedback

Explore potential concepts and evaluation results with stakeholders and the public



Review stakeholder and public feedback

Present preferred plan to stakeholders and the public

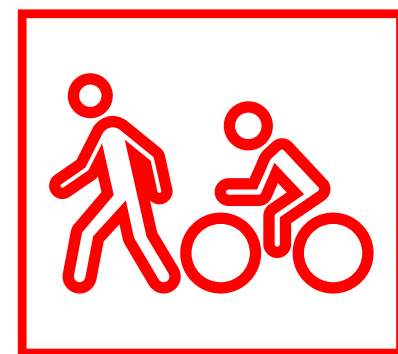


Review feedback and refine plan

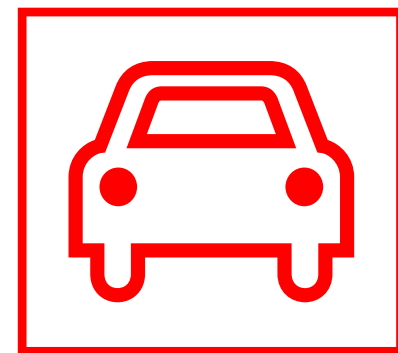
Post final plan online



## Overall Themes We Heard in the Discover Phase



- It is important to accommodate pedestrians and cyclists along the study corridor.
- There are missing segments of pathways.
- Desire for safe active modes crossing of Deerfoot Trail.



- Provide connection for all modes of transportation.
- Support for industrial growth and goods movement.



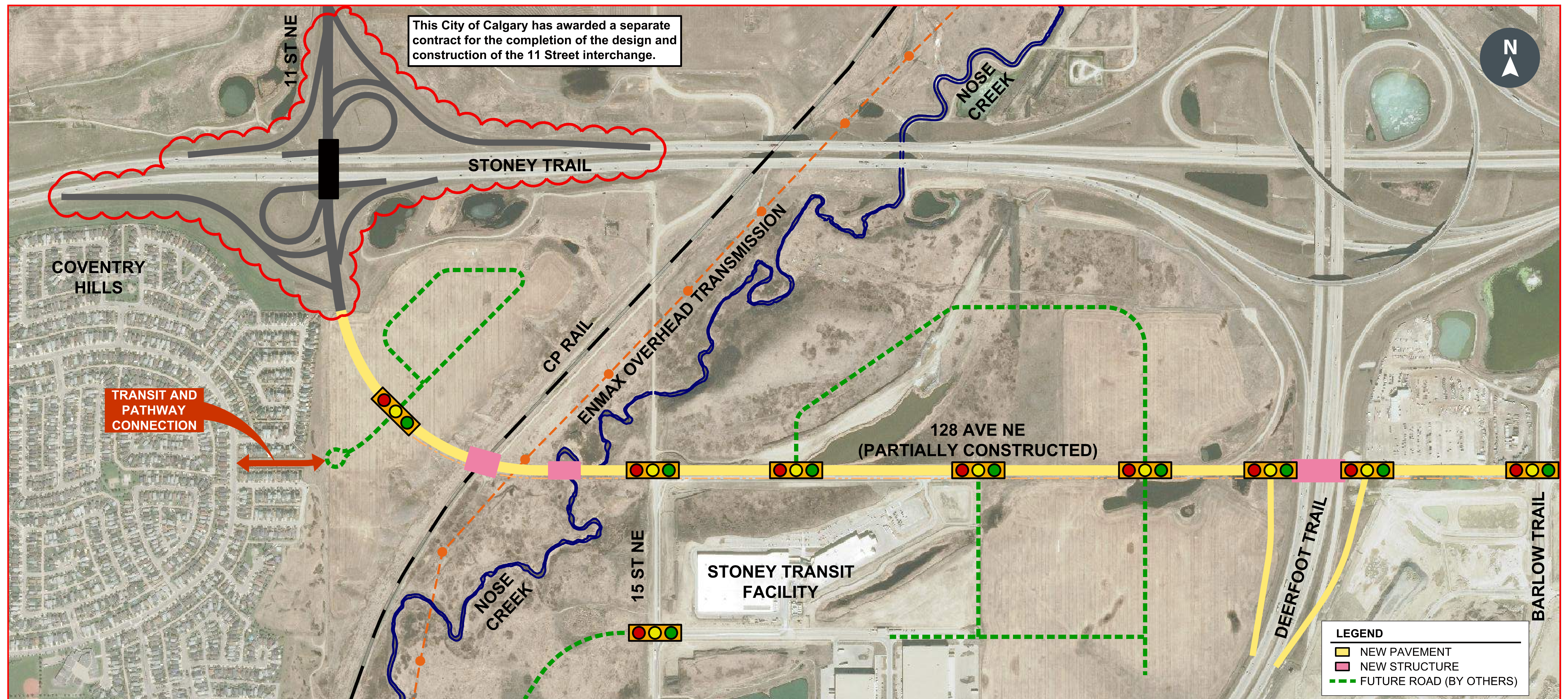
- Nose Creek alignment and protection is a priority.



- Participants expressed concern about the proximity of the 128 Avenue N.E. interchange to the one at Stoney Trail N.E. and Deerfoot Trail, however the 128 Avenue N.E. interchange location is in alignment with the existing transportation plans of the Provincial Government.

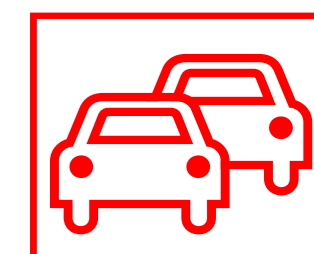


The City is undertaking a functional planning study to provide an east-west connection through the Stoney Industrial Area between Stoney Trail N.E. and Barlow Trail N.E. Using technical analysis and feedback from Calgarians in the Discover Phase, we have developed concepts and alignment options and would like your feedback to develop the recommended plan.



## Pathway and Community Connectivity:

- Multiple existing and planned pathways within and adjacent to the 128 Avenue N.E. study area, with a number of gaps or missing links.
- The 128 Avenue N.E. corridor will be important in closing multiple gaps in the pathway system.
- Linkage to the Coventry Hills community required.



## Traffic Accommodations:

- Ultimate cross section is six lanes, divided.
- Accommodate all modes of travel along the corridor.
- Access management and spacing requirements, with multiple intersections along 128 Avenue N.E. to service adjacent land.

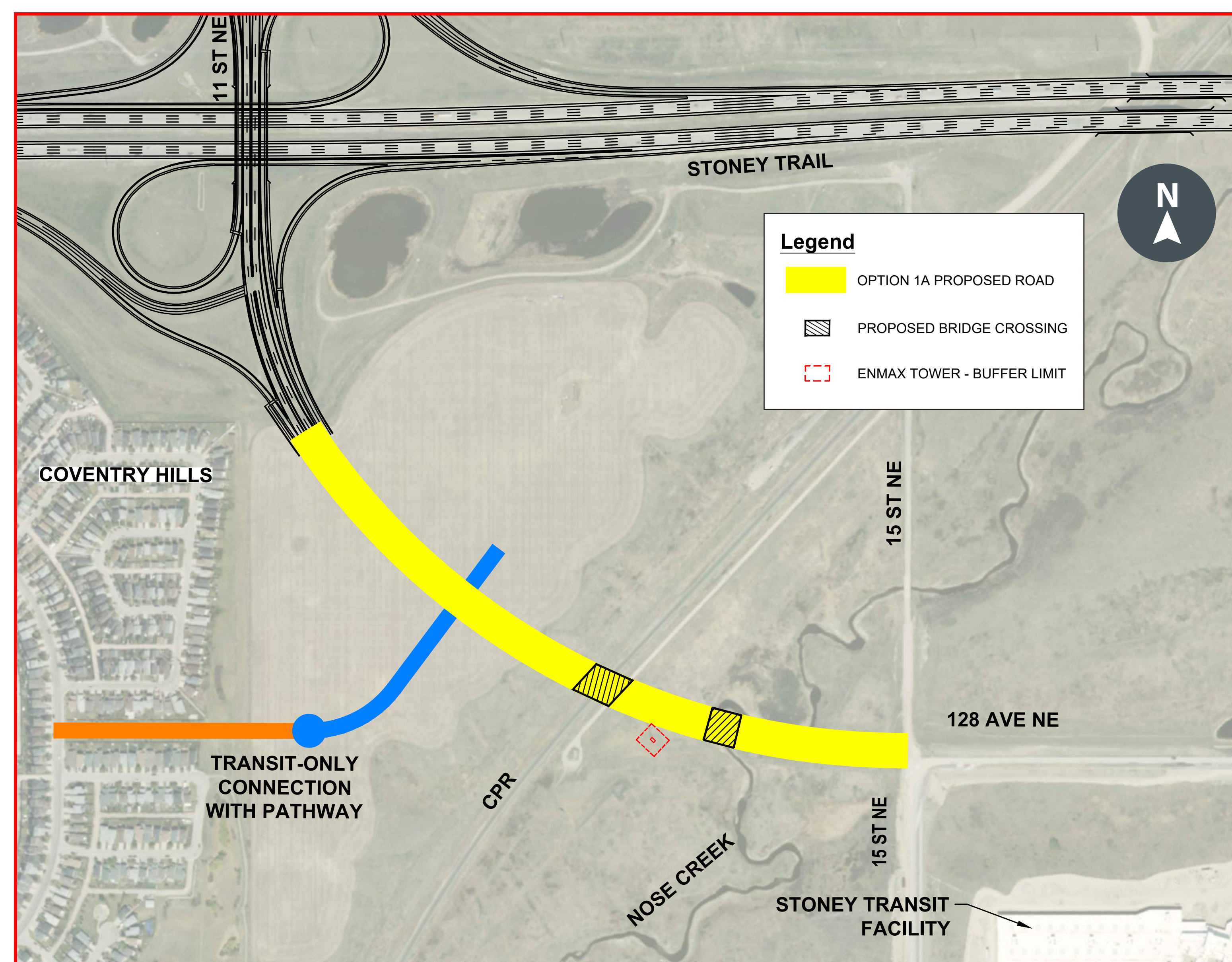


## Design Constraints West of 15 Street N.E.:

- Multiple utilities impacted (e.g., watermain, overhead power lines).
- Significant east-west grade difference, with new grade-separated crossings of the CP Rail lines and Nose Creek. Creek realignment will be required at the crossing point.
- Access requirements for adjacent developable land.



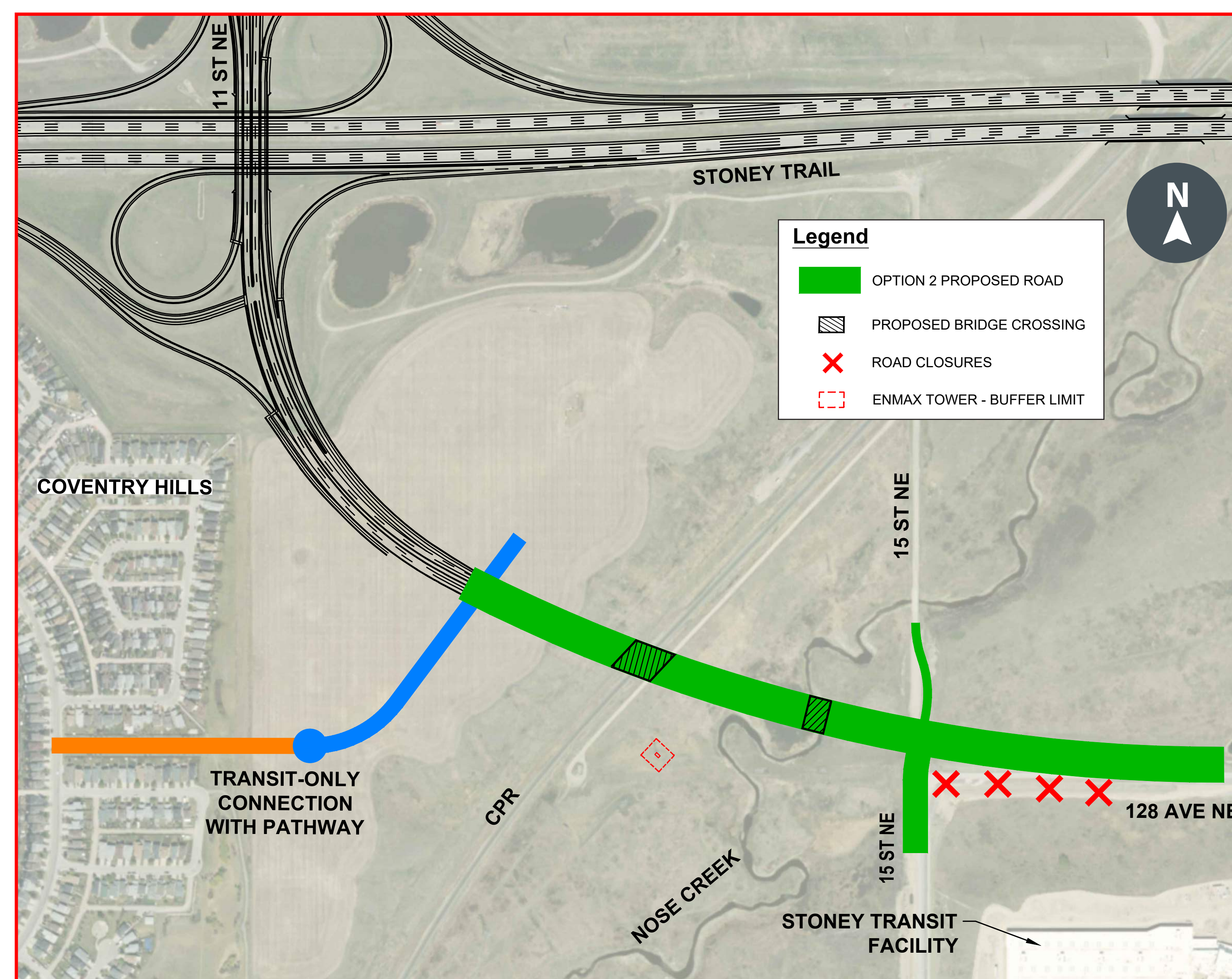
## Maintain Existing 15 Street N.E. Intersection



### Option 1

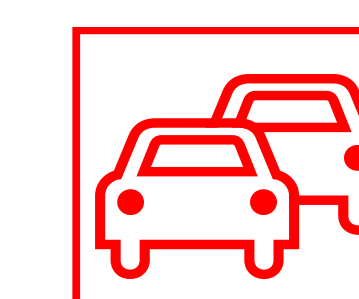
- No impact on 15 Street N.E. intersection.
- Minimal construction impacts.
- Most impact on deep utilities.
- Immediately adjacent to Enmax tower.

## Relocate 15 Street N.E. Intersection

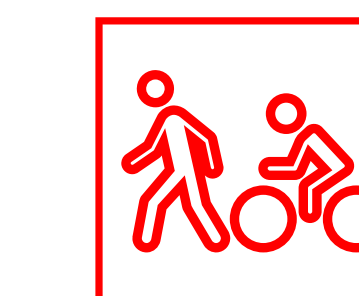


### Option 2

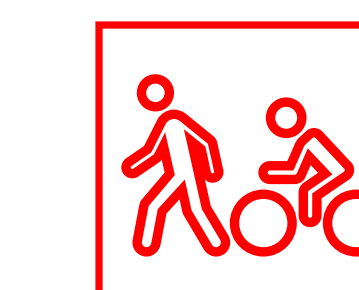
- Requires reconstruction of a portion of 128 Avenue N.E.
- Some disruption during construction.
- Increased property impact (east of 15 Street N.E.).
- Least impact on deep utilities (compared to Option 1).
- Largest offset from Enmax tower.



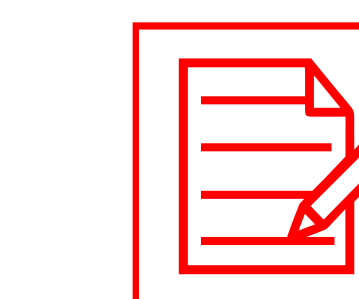
Ultimate six-lane divided cross section proposed for 128 Avenue N.E.



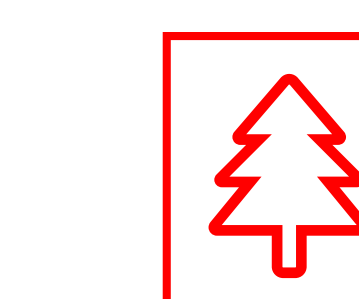
3.5 m pathways to be provided along both sides of 128 Avenue N.E., with connectivity to existing and future pathway network.



Future transit-only connection and pathway link with Coventry Hills community confirmed.

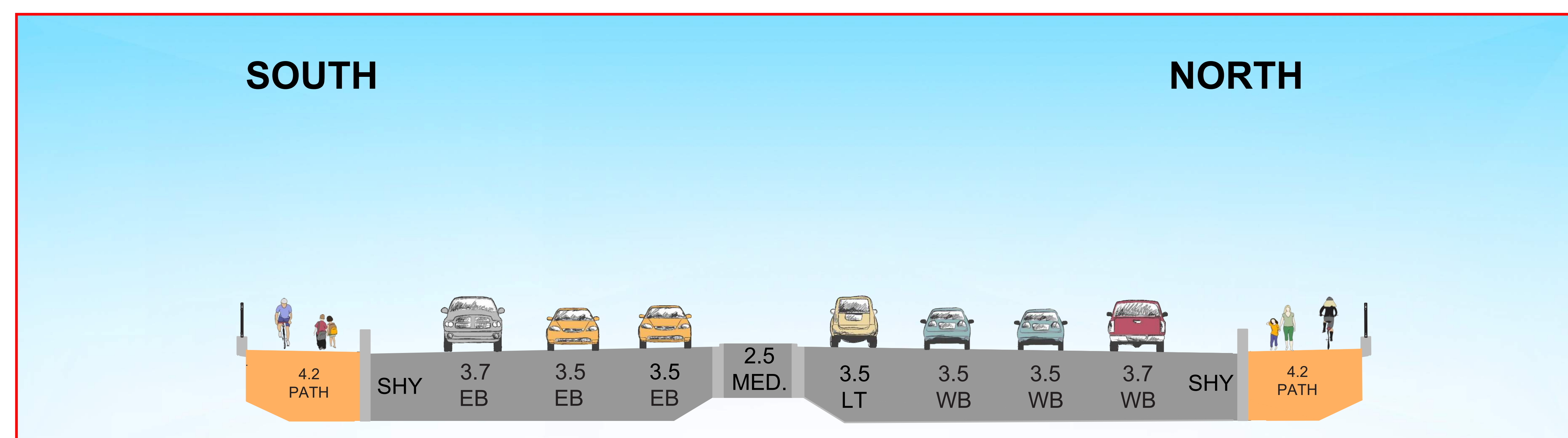
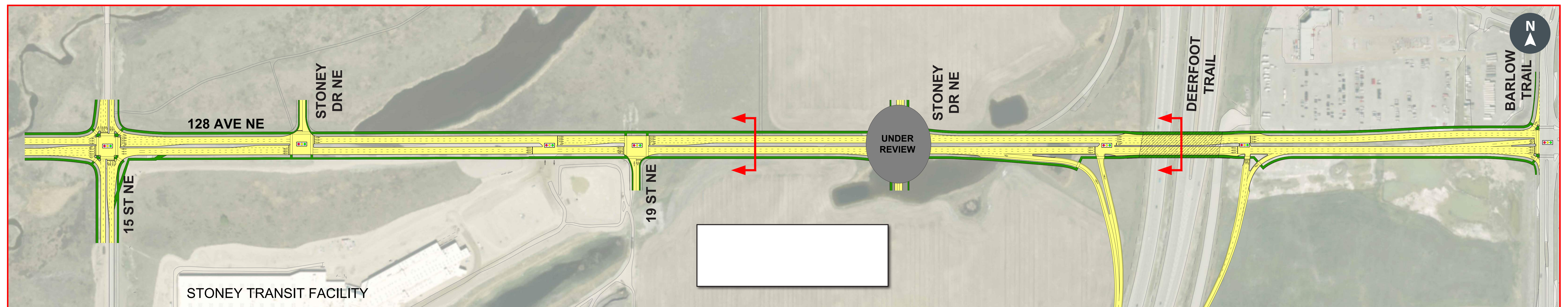
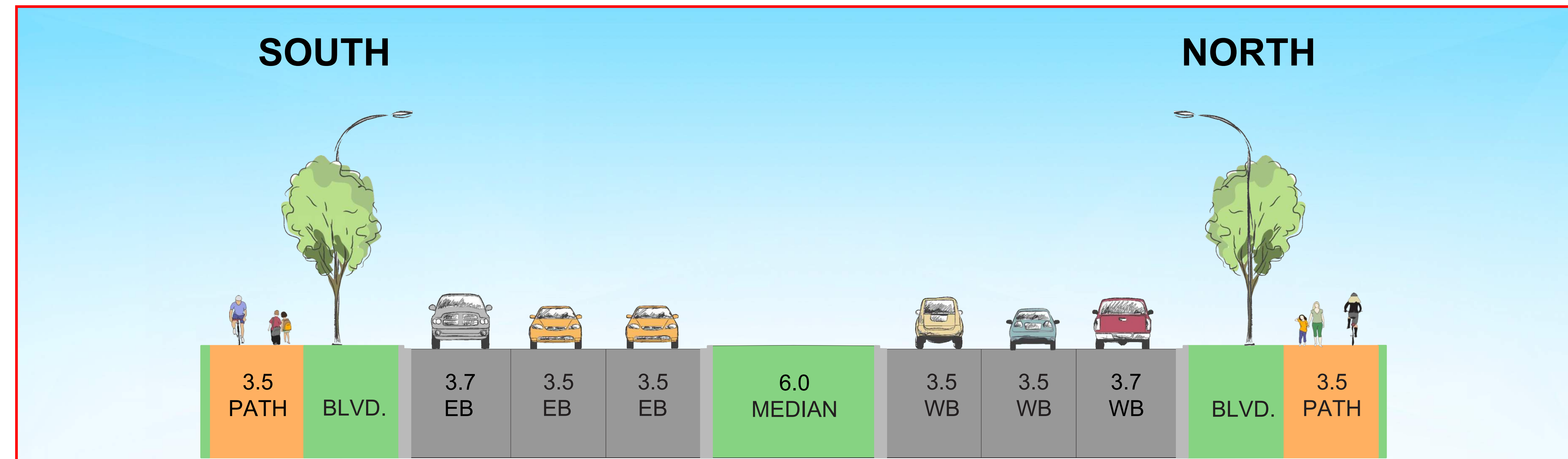


Raising Enmax power lines for adequate clearance above 128 Avenue N.E.

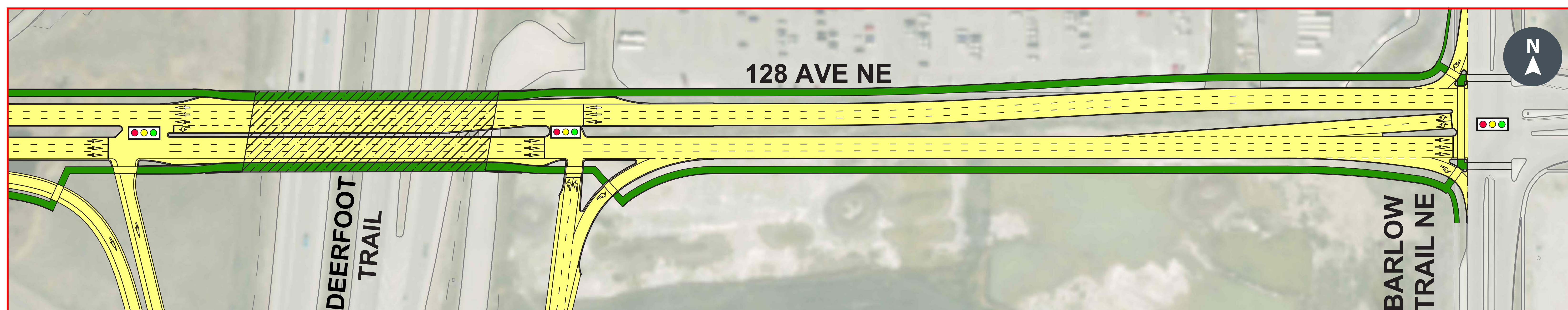
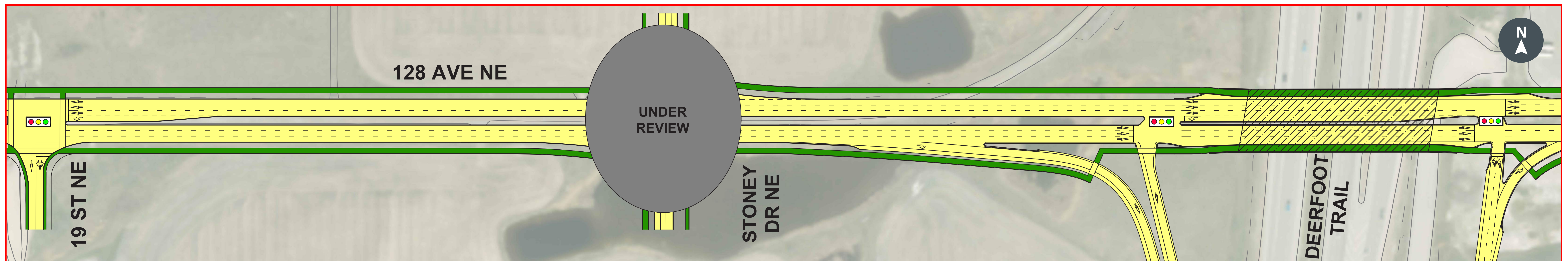
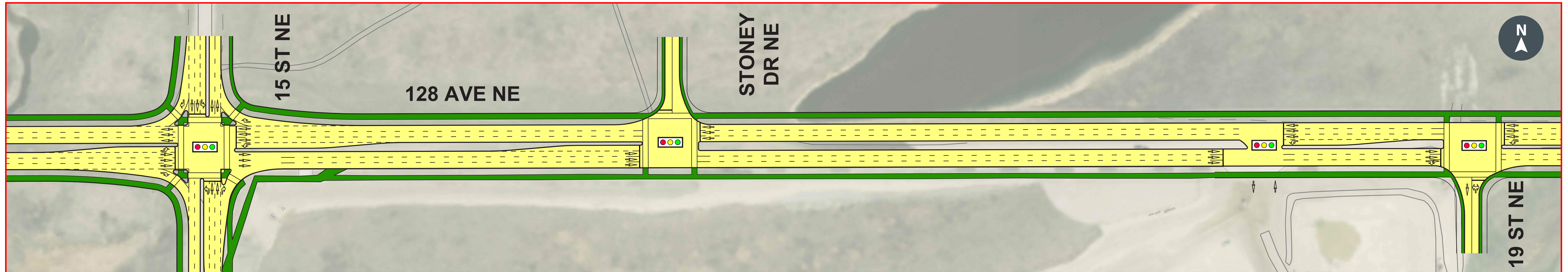


Realignment and protection of Nose Creek at the crossing point. Realignment and mitigation measures to be confirmed once a preferred alignment is identified.



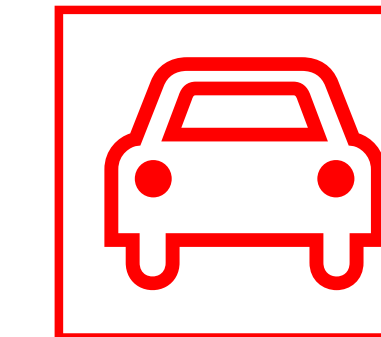
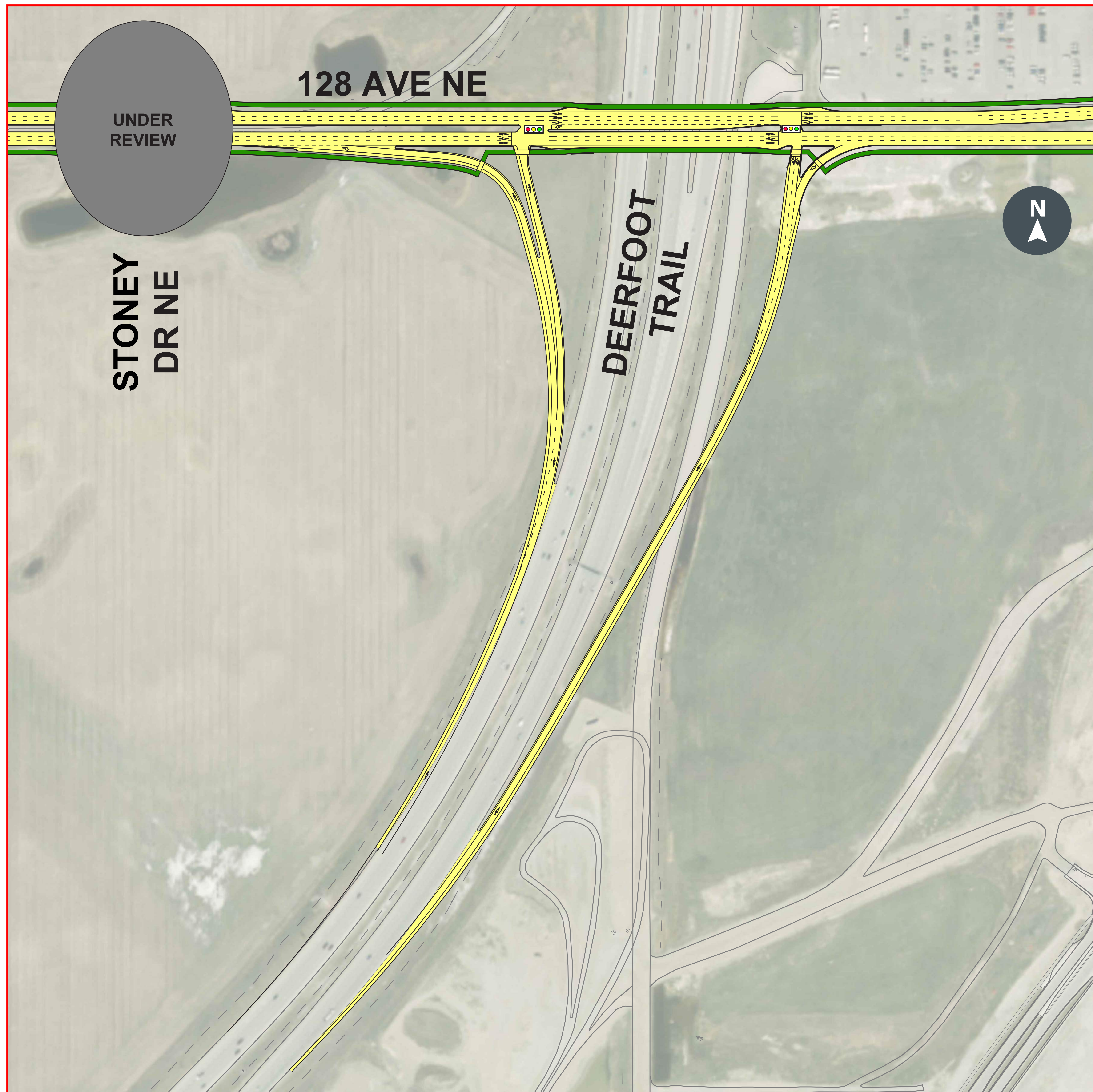




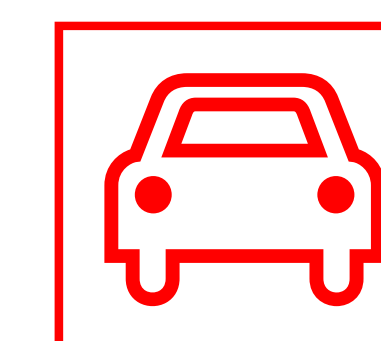


- Ultimate six-lane divided cross section on 128 Avenue N.E.
- Interim stages for roadway and Deerfoot Trail interchange to be determined based on progress of area development activity.

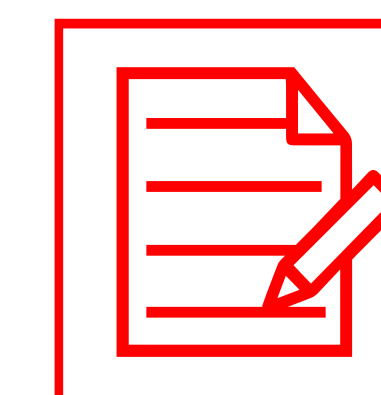




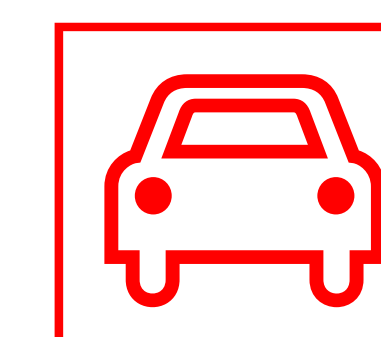
A “Half Diamond” interchange configuration has been confirmed. This is consistent with previous planning for this interchange. No viable alternative configurations were identified or evaluated.



East and west ramp terminal intersections will be signal controlled.

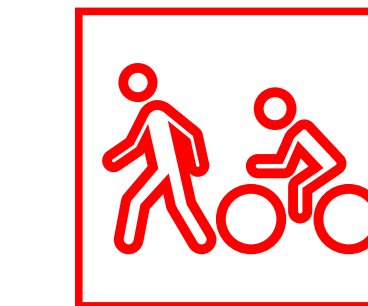
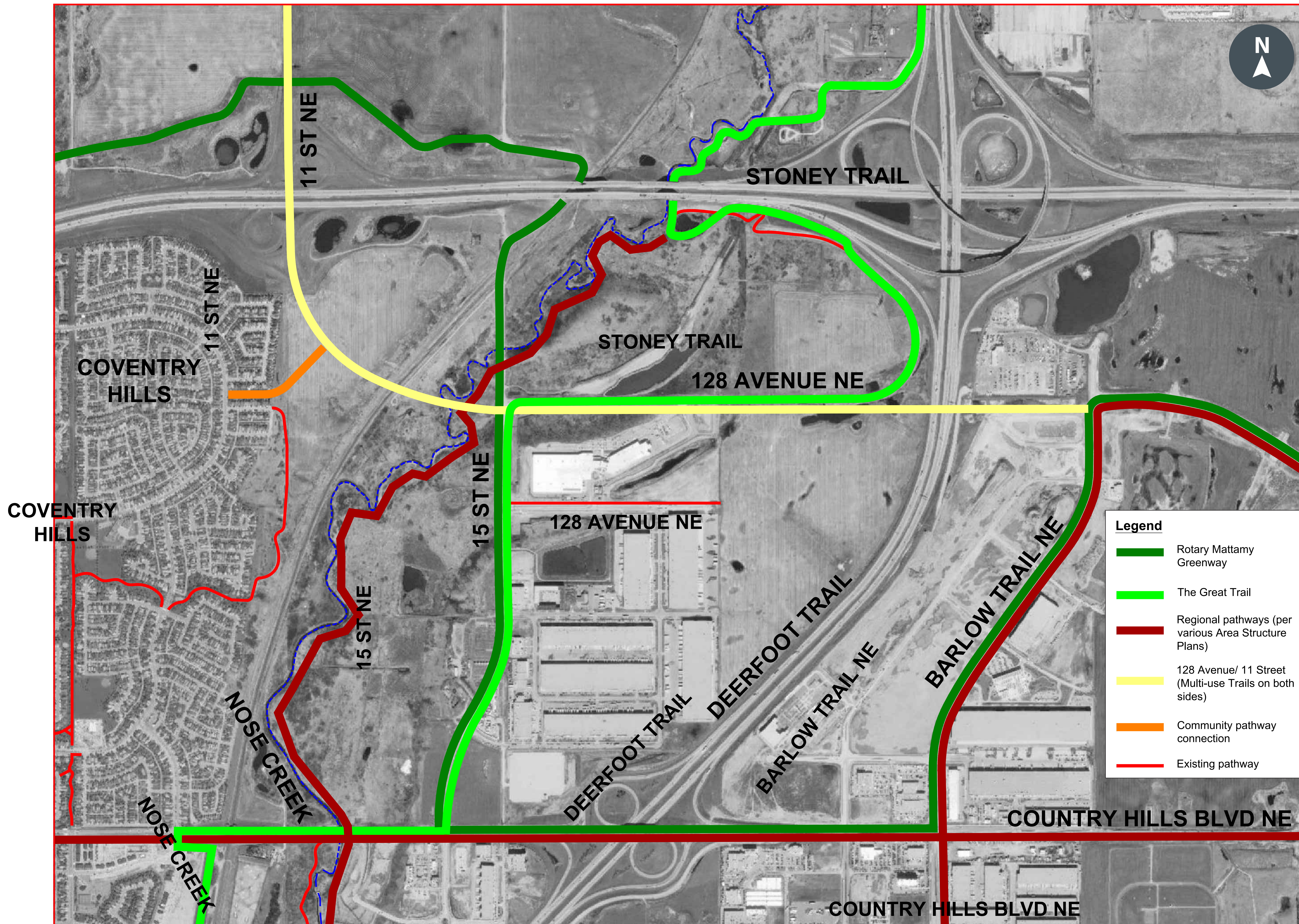


Staged implementation of the interchange can be considered, depending on the location, intensity and pace of area development.

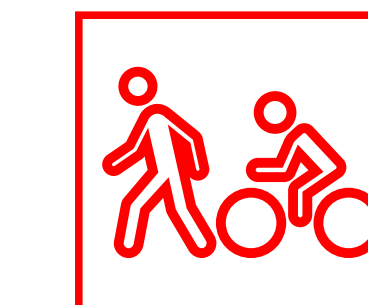


Operating conditions between 128 Avenue N.E. and Country Hills Boulevard N.E. interchanges have been assessed and determined to be acceptable.

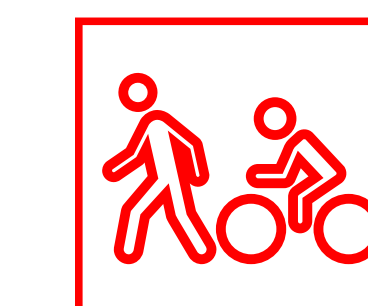




There are multiple existing and planned pathways within and adjacent to the 128 Avenue N.E. study area, with a number of gaps or missing links.



Completion of the 128 Avenue N.E. corridor, with pathways along both sides and a crossing of Deerfoot Trail N.E., will close multiple gaps in the pathway system.



The Coventry Hills community will be linked to the pathway system with the proposed connection (jointly with a transit-only link).



# Next Steps



1. Discover Phase: Document and Assess Existing Conditions (Completed December 2019)
2. **Explore Phase:** Development and Analyze Concepts (January - July 2020)
  - The online survey is open until **July 26, 2020** at [calgary.ca/CountryHillsWidening](https://calgary.ca/CountryHillsWidening) or [calgary.ca/128AveNE](https://calgary.ca/128AveNE)
3. Reveal Phase: Presentation of Recommended Plan (August - December 2020)



## How will public feedback be used?

The City will prepare a What We Heard report summarizing all feedback following this and future public engagement sessions. Your input will help inform the design concept and the preferred plan for the Country Hills Boulevard N.E. and 128 Avenue N.E. study areas.

For ongoing project updates, information regarding future engagement events, or to sign up for email updates, visit [calgary.ca/CountryHillsWidening](https://calgary.ca/CountryHillsWidening) or [calgary.ca/128AveNE](https://calgary.ca/128AveNE).

# Thank you for your interest.

Please take a moment to provide your feedback online. Your feedback will help us improve our future engagement events.